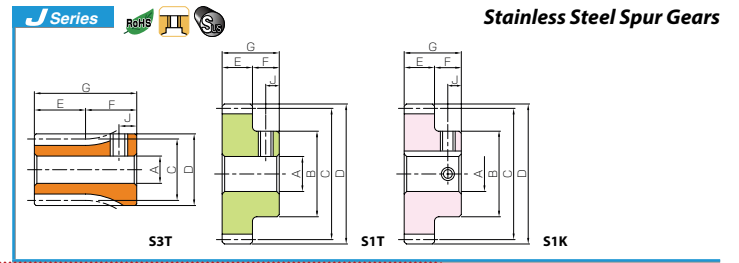
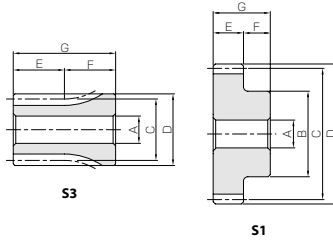




Specifications	
Precision grade	JIS grade NB (JIS B1702-1: 1998) + JIS grade 4 (JIS B1702: 1978)
Gear teeth	Standard full depth
Pressure angle	20°
Material	SUS303
Heat treatment	—
Tooth hardness	(less than 187HB)
Face width (E)	10
Screw offset (J)	5

* The precision grade of J Series products is equivalent to the value shown in the table.



Catalog No.	No. of teeth	Shape	Bore				Hub width	Total length	Allowable torque (N·m)		Allowable torque (kgf·m)		Backlash (mm)	Weight (kg)
			A _{H7}	B	C	D			Bending strength	Surface durability	Bending strength	Surface durability		
SUS1-15	15	S3	8	17	15	17	20	30	2.04	0.12	0.21	0.013	0.037	
SUS1-16	16			18	16	18			2.26	0.14	0.23	0.015		0.044
SUS1-18	18			20	18	20			2.71	0.18	0.28	0.019		0.057
SUS1-20	20			16	20	22			3.18	0.23	0.32	0.024		0.032
SUS1-22	22			18	22	24			3.65	0.29	0.37	0.029		0.042
SUS1-24	24			20	24	26			4.13	0.35	0.42	0.036		0.052
SUS1-25	25	S1	10	20	25	27	10	20	4.37	0.38	0.45	0.039	0.055	
SUS1-28	28			23	28	30			5.11	0.48	0.52	0.049	0.073	
SUS1-30	30			25	30	32			5.6	0.56	0.57	0.057	0.086	
SUS1-32	32			26	32	34			6.11	0.64	0.62	0.066	0.096	
SUS1-35	35			26	35	37			6.87	0.78	0.70	0.079	0.11	
SUS1-36	36			28	36	38			7.12	0.82	0.73	0.084	0.12	
SUS1-40	40			35	40	42			8.15	1.03	0.83	0.11	0.16	
SUS1-42	42			35	42	44			8.66	1.14	0.88	0.12	0.17	
SUS1-45	45			35	45	47			9.44	1.32	0.96	0.13	0.19	
SUS1-48	48			35	48	50			10.2	1.51	1.04	0.15	0.20	
SUS1-50	50			35	50	52			10.8	1.65	1.10	0.17	0.22	
SUS1-55	55			40	55	57			12.1	2.01	1.23	0.21	0.27	
SUS1-56	56	40	56	58	12.3	2.09	1.26	0.21	0.28					
SUS1-60	60	40	60	62	13.4	2.42	1.37	0.25	0.31					
SUS1-64	64	45	64	66	14.5	2.77	1.47	0.28	0.36					
SUS1-70	70	50	70	72	16.1	3.34	1.64	0.34	0.44					
SUS1-75	75	55	75	77	17.4	3.86	1.77	0.39	0.52					
SUS1-80	80	60	80	82	18.7	4.42	1.91	0.45	0.60					
SUS1-90	90	60	90	92	21.4	5.67	2.19	0.58	0.70					
SUS1-100	100	60	100	102	24.1	7.08	2.46	0.72	0.82					
SUS1-120	120	12	60	120	29.6	10.4	3.01	1.06	1.09					

[Caution on Product Characteristics] ① The allowable torques shown in the table are calculated values according to the assumed usage conditions. Please see Page 31 for more details.
 ② The backlash values shown in the table are the theoretical values for the backlash in the normal direction of a pair of identical gears in mesh.

[Caution on Secondary Operations] ① Please read "Caution on Performing Secondary Operations" (Page 32) when performing modifications and/or secondary operations for safety concerns. KHK Quick-Mod Gears, the KHK's system for quick modification of KHK stock gears is also available.
 ② Avoid performing secondary operations that narrow the tooth width as it affects precision and strength.

To order J Series products, please specify; Catalog No. + J + BORE

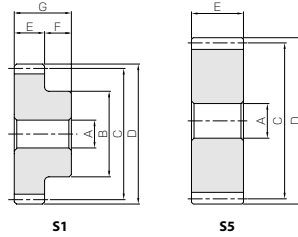
Bore H7	* The product shapes of J Series items are identified by background color.															
	8	10	12	14	15	16	17	18	19	20	22	25	28	30	32	35
Keyway Js9	8	10	12	14	15	16	17	18	19	20	22	25	28	30	32	35
Screw size	—	4 x 1.8			5 x 2.3			6 x 2.8			8 x 3.3		10 x 3.3			
Catalog No.	M5	M4			M5			M6		M8						
SUS1-15 J BORE																
SUS1-16 J BORE																
SUS1-18 J BORE																
SUS1-20 J BORE																
SUS1-22 J BORE																
SUS1-24 J BORE																
SUS1-25 J BORE																
SUS1-28 J BORE																
SUS1-30 J BORE																
SUS1-32 J BORE																
SUS1-35 J BORE																
SUS1-36 J BORE																
SUS1-40 J BORE																
SUS1-42 J BORE																
SUS1-45 J BORE																
SUS1-48 J BORE																
SUS1-50 J BORE																
SUS1-55 J BORE																
SUS1-56 J BORE																
SUS1-60 J BORE																
SUS1-64 J BORE																
SUS1-70 J BORE																
SUS1-75 J BORE																
SUS1-80 J BORE																
SUS1-90 J BORE																
SUS1-100 J BORE																
SUS1-120 J BORE																

[Caution on J series] ① As available-on-request products, requires a lead-time for shipping within 2 working-days (excludes the day ordered), after placing an order. Please allow additional shipping time to get to your local distributor.
 ② Number of products we can process for one order is 1 to 20 units. For quantities of 21 or more pieces, we need to quote price and lead time.
 ③ Keyways are made according to JIS B1301 standards, Js9 tolerance.
 ④ Certain products which would otherwise have a very long tapped hole are counterbored to reduce the length of the tap.
 ⑤ For products having a tapped hole, a set screw is included.
 ⑥ The use of S3T and S1T shaped set screws for fastening gears to a shaft are only applicable to light load usage. For secure fastening, please use dowel pins, in combination.



Specifications		
Precision grade	JIS grade N8 (JIS B1702-1: 1998) + JIS grade 4 (JIS B1702: 1978)	
Gear teeth	Standard full depth	
Pressure angle	20°	
Material	SUS303	
Heat treatment	—	
Tooth hardness	(less than 187HB)	
Module	m 1.5	m 2
Face width (E)	15	20
Screw offset (J)	7	8

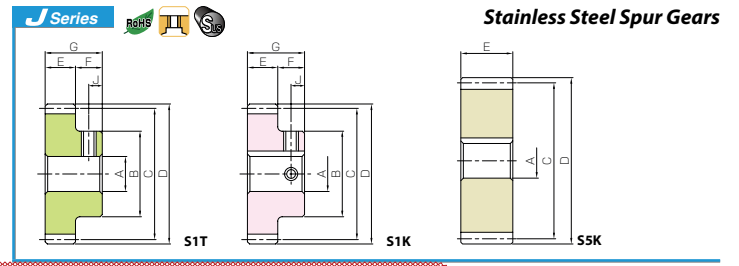
* The precision grade of J Series products is equivalent to the value shown in the table.



Catalog No.	No. of teeth	Shape	Bore A _{H7}	Hub dia. B	Pitch dia. C	Outside dia. D	Hub width F	Total length G	Allowable torque (N·m)		Allowable torque (kgf·m)		Backlash (mm)	Weight (kg)										
									Bending strength	Surface durability	Bending strength	Surface durability												
SUS1.5-15	15	S1	8	18	22.5	25.5	14	16	6.89	0.43	0.70	0.044	0.10~0.22	0.063										
SUS1.5-16	16								7.63	0.50	0.78	0.051			0.076									
SUS1.5-18	18								9.16	0.65	0.93	0.066			0.12									
SUS1.5-20	20								10.7	0.82	1.09	0.084			0.15									
SUS1.5-22	22								12.3	1.01	1.26	0.10			0.17									
SUS1.5-24	24								13.9	1.23	1.42	0.13			0.20									
SUS1.5-25	25								14.8	1.35	1.50	0.14			0.26									
SUS1.5-28	28								17.2	1.71	1.76	0.17			0.29									
SUS1.5-30	30								18.9	1.98	1.93	0.20			0.33									
SUS1.5-32	32								20.6	2.27	2.10	0.23			0.39									
SUS1.5-35	35	S1	10	42	52.5	55.5	14	16	23.2	2.74	2.36	0.28	0.12~0.26	0.39										
SUS1.5-36	36								24.0	2.91	2.45	0.30			0.42									
SUS1.5-40	40								27.5	3.62	2.80	0.37			0.48									
SUS1.5-42	42								29.2	4.01	2.98	0.41			0.51									
SUS1.5-45	45								31.9	4.64	3.25	0.47			0.57									
SUS1.5-48	48								34.5	5.31	3.52	0.54			0.62									
SUS1.5-50	50								36.3	5.79	3.70	0.59			0.71									
SUS1.5-55	55								40.7	7.08	4.15	0.72			0.86									
SUS1.5-56	56								41.6	7.36	4.24	0.75			0.88									
SUS1.5-60	60								45.2	8.51	4.61	0.87			1.01									
SUS1.5-64	64	S1	12	60	96	99	14	16	48.8	9.75	4.97	0.99	0.14~0.32	1.12										
SUS1.5-70	70								54.2	11.8	5.52	1.20			1.39									
SUS1.5-75	75								58.7	13.6	5.99	1.39			1.54									
SUS1.5-80	80								63.2	15.6	6.45	1.59			1.83									
SUS1.5-90	90								72.3	20.1	7.37	2.05			2.18									
SUS1.5-100	100								81.4	25.2	8.30	2.57			2.58									
SUS2-15	15								S1	12	24	30			34	29	36	16.3	1.05	1.67	0.11	0.18~0.38	0.13	
SUS2-16	16																	18.1	1.22	1.85	0.12			0.16
SUS2-18	18																	21.7	1.59	2.21	0.16			0.22
SUS2-20	20																	25.4	2.01	2.59	0.20			0.26
SUS2-22	22	29.2	2.48	2.98	0.25	0.33																		
SUS2-24	24	33.0	3.01	3.37	0.31	0.39																		
SUS2-25	25	35.0	3.30	3.57	0.34	0.43																		
SUS2-28	28	40.9	4.18	4.17	0.43	0.55																		
SUS2-30	30	44.8	4.83	4.57	0.49	0.65																		
SUS2-32	32	48.9	5.53	4.98	0.56	0.76																		
SUS2-35	35	54.9	6.67	5.60	0.68	0.84																		
SUS2-36	36	57.0	7.08	5.81	0.72	0.84																		
SUS2-40	40	65.2	8.85	6.65	0.90	1.00																		
SUS2-42	42	69.3	9.81	7.07	1.00	1.10																		
SUS2-45	45	S5	15	90	94	104	—	—	75.5	11.4	7.70	1.16	0.14~0.30	0.96										
SUS2-48	48								81.8	13.0	8.34	1.33			1.10									
SUS2-50	50								86.0	14.2	8.77	1.44			1.20									
SUS2-55	55								96.5	17.3	9.84	1.77			1.45									
SUS2-56	56								98.7	18.0	10.1	1.83			1.51									
SUS2-60	60								107	20.8	10.9	2.13			1.74									
SUS2-64	64								116	23.9	11.8	2.44			1.98									
SUS2-70	70								128	29.0	13.1	2.96			2.37									

[Caution on Product Characteristics] ① The allowable torques shown in the table are calculated values according to the assumed usage conditions. Please see Page 31 for more details.
② The backlash values shown in the table are the theoretical values for the backlash in the normal direction of a pair of identical gears in mesh.

[Caution on Secondary Operations] ① Please read "Caution on Performing Secondary Operations" (Page 32) when performing modifications and/or secondary operations for safety concerns. KHK Quick-Mod Gears, the KHK's system for quick modification of KHK stock gears is also available.
② Avoid performing secondary operations that narrow the tooth width as it affects precision and strength.



To order J Series products, please specify; Catalog No. + J + BORE

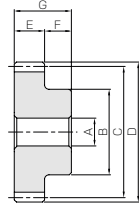
Bore H7	* The product shapes of J Series items are identified by background color.																																		
	8	10	12	14	15	16	17	18	19	20	22	25	28	30	32	35	40	45	50																
Keyway Js9	—																																		
Screw size	4 × 1.8					5 × 2.3					6 × 2.8					8 × 3.3					10 × 3.3					12 × 3.3					14 × 3.8				
Catalog No.	M5					M4					M5					M6					M8					M10					—				
SUS1.5-15 J BORE	[Background color: Green]																																		
SUS1.5-16 J BORE	[Background color: Green]																																		
SUS1.5-18 J BORE	[Background color: Green]																																		
SUS1.5-20 J BORE	[Background color: Green]																																		
SUS1.5-22 J BORE	[Background color: Green]																																		
SUS1.5-24 J BORE	[Background color: Green]																																		
SUS1.5-25 J BORE	[Background color: Green]																																		
SUS1.5-28 J BORE	[Background color: Green]																																		
SUS1.5-30 J BORE	[Background color: Green]																																		
SUS1.5-32 J BORE	[Background color: Green]																																		
SUS1.5-35 J BORE	[Background color: Green]																																		
SUS1.5-36 J BORE	[Background color: Green]																																		
SUS1.5-40 J BORE	[Background color: Green]																																		
SUS1.5-42 J BORE	[Background color: Green]																																		
SUS1.5-45 J BORE	[Background color: Green]																																		
SUS1.5-48 J BORE	[Background color: Green]																																		
SUS1.5-50 J BORE	[Background color: Green]																																		
SUS1.5-55 J BORE	[Background color: Green]																																		
SUS1.5-56 J BORE	[Background color: Green]																																		
SUS1.5-60 J BORE	[Background color: Green]																																		
SUS1.5-64 J BORE	[Background color: Green]																																		
SUS1.5-70 J BORE	[Background color: Green]																																		
SUS1.5-75 J BORE	[Background color: Green]																																		
SUS1.5-80 J BORE	[Background color: Green]																																		
SUS1.5-90 J BORE	[Background color: Green]																																		
SUS1.5-100 J BORE	[Background color: Green]																																		
SUS2-15 J BORE	[Background color: Green]																																		
SUS2-16 J BORE	[Background color: Green]																																		
SUS2-18 J BORE	[Background color: Green]																																		
SUS2-20 J BORE	[Background color: Green]																																		
SUS2-22 J BORE	[Background color: Green]																																		
SUS2-24 J BORE	[Background color: Green]																																		
SUS2-25 J BORE	[Background color: Green]																																		
SUS2-28 J BORE	[Background color: Green]																																		
SUS2-30 J BORE	[Background color: Green]																																		
SUSA2-32 J BORE	[Background color: Yellow]																																		
SUSA2-35 J BORE	[Background color: Yellow]																																		
SUSA2-36 J BORE	[Background color: Yellow]																																		
SUSA2-40 J BORE	[Background color: Yellow]																																		
SUSA2-42 J BORE	[Background color: Yellow]																																		
SUSA2-45 J BORE	[Background color: Yellow]																																		
SUSA2-48 J BORE	[Background color: Yellow]																																		
SUSA2-50 J BORE	[Background color: Yellow]																																		
SUSA2-55 J BORE	[Background color: Yellow]																																		
SUSA2-56 J BORE	[Background color: Yellow]																																		
SUSA2-60 J BORE	[Background color: Yellow]																																		
SUSA2-64 J BORE	[Background color: Yellow]																																		
SUSA2-70 J BORE	[Background color: Yellow]																																		

[Caution on J series] ① As available-on-request products, requires a lead-time for shipping within 2 working-days (excludes the day ordered), after placing an order. Please allow additional shipping time to get to your local distributor.
② Number of products we can process for one order is 1 to 20 units. For quantities of 21 or more pieces, we need to quote price and lead time.
③ Keyways are made according to JIS B1301 standards, Js9 tolerance.
④ Certain products which would otherwise have a very long tapped hole are counterbored to reduce the length of the tap.
⑤ For products having a tapped hole, a set screw is included.
⑥ The use of S1T and S1K shaped set screws for fastening gears to a shaft are only applicable to light load usage. For secure fastening, please use dowel pins, in combination.

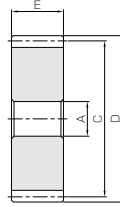


Specifications			
Precision grade	JIS grade N8 (JIS B1702-1: 1988) + JIS grade 4 (JIS B1702: 1978)		
Gear teeth	Standard full depth		
Pressure angle	20°		
Material	SUS303		
Heat treatment	—		
Tooth hardness	(less than 187HB)		
Module	m 2.5	m 3	m 4
Face width (E)	25	30	40
Screw offset (J)	9	10	12.5

* The precision grade of J Series products is equivalent to the value shown in the table.



S1

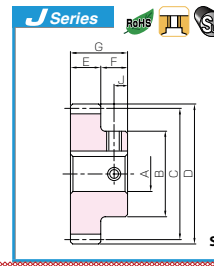


S5

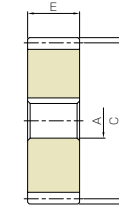
Catalog No.	No. of teeth	Shape	Bore A _{H7}	Hub dia. B	Pitch dia. C	Outside dia. D	Hub width F	Total length G	Allowable torque (N·m)		Allowable torque (kgf·m)		Backlash (mm)	Weight (kg)
									Bending strength	Surface durability	Bending strength	Surface durability		
SUS2.5-15	15	S1	15	30	37.5	42.5	18	43	31.9	2.11	3.25	0.21	0.14~0.28	0.26
SUS2.5-16	16			32	40	45			35.3	2.44	3.6	0.25		0.30
SUS2.5-18	18			38	45	50			42.4	3.18	4.32	0.32		0.41
SUS2.5-20	20			40	50	55			49.6	4.02	5.06	0.41		0.50
SUS2.5-22	22			44	55	60			57.0	4.96	5.81	0.51		0.62
SUS2.5-24	24	S5	20	48	60	65	—	—	64.5	6.01	6.58	0.61	0.16~0.34	0.75
SUS2.5-25	25			50	62.5	67.5			68.3	6.58	6.96	0.67		0.81
SUS2.5-28	28			60	70	75			79.8	8.34	8.14	0.85		1.09
SUS2.5-30	30			65	75	80			87.6	9.65	8.93	0.98		1.27
SUSA2.5-32	32			80	85	—			95.4	11.1	9.73	1.13		0.95
SUSA2.5-35	35			87.5	92.5	—			107	13.4	10.9	1.36		1.14
SUSA2.5-36	36			90	95	—			111	14.2	11.3	1.45		1.21
SUSA2.5-40	40			100	105	—			127	17.7	13.0	1.81		1.47
SUSA2.5-42	42			105	110	—			135	19.6	13.8	2.00		1.63
SUSA2.5-45	45			112.5	117.5	—			148	22.7	15.0	2.31		1.88
SUSA2.5-48	48			120	125	—			160	26.1	16.3	2.66		2.14
SUSA2.5-50	50	125	130	—	168	28.4	17.1	2.90	2.33					
SUSA2.5-55	55	137.5	142.5	—	189	34.9	19.2	3.56	2.83					
SUSA2.5-56	56	140	145	—	193	36.2	19.6	3.70	2.94					
SUSA2.5-60	60	150	155	—	209	42.0	21.3	4.28	3.38					
SUSA2.5-64	64	160	165	—	226	48.2	23.0	4.91	3.86					
SUS3-15	15	S1	15	36	45	51	20	50	55.1	3.71	5.62	0.38	0.14~0.32	0.46
SUS3-16	16			38	48	54			61.1	4.29	6.23	0.44		0.53
SUS3-18	18			40	54	60			73.3	5.59	7.47	0.57		0.66
SUS3-20	20			50	60	66			85.8	7.07	8.74	0.72		0.90
SUS3-22	22			54	66	72			98.5	8.73	10.0	0.89		1.09
SUS3-24	24	S5	20	58	72	78	—	—	111	10.6	11.4	1.08	0.18~0.38	1.30
SUS3-25	25			60	75	81			118	11.6	12.0	1.18		1.35
SUS3-28	28			70	84	90			138	14.7	14.1	1.50		1.77
SUS3-30	30			75	90	96			151	17.0	15.4	1.74		2.06
SUSA3-32	32			96	102	—			165	19.5	16.8	1.99		1.62
SUSA3-35	35			105	111	—			185	23.6	18.9	2.40		1.95
SUSA3-36	36			108	114	—			192	25.0	19.6	2.55		2.07
SUSA3-40	40			120	126	—			220	31.3	22.4	3.19		2.53
SUSA3-42	42			126	132	—			234	34.7	23.9	3.54		2.80
SUSA3-45	45			135	141	—			255	40.2	26.0	4.10		3.23
SUSA3-48	48			144	150	—			276	46.2	28.2	4.71		3.70
SUSA3-50	50	150	156	—	290	50.4	29.6	5.14	4.02					
SUSA3-55	55	165	171	—	326	61.7	33.2	6.30	4.89					
SUSA3-56	56	168	174	—	333	64.1	33.9	6.54	5.07					
SUSA3-60	60	180	186	—	362	74.3	36.9	7.58	5.84					
SUS4-15	15	S1	20	45	60	68	25	65	131	9.06	13.3	0.92	0.18~0.38	1.03
SUS4-20	20			65	80	88			203	17.3	20.7	1.76		2.06
SUS4-25	25			84	100	108			280	28.3	28.5	2.89		3.37
SUS4-30	30			100	120	128			359	41.7	36.6	4.25		4.90
SUSA4-40	40	S5	30	160	168	—	—	—	521	77.1	53.2	7.86	0.24~0.52	6.05
SUSA4-50	50			200	208	—			573	103	58.5	10.5		9.58

[Caution on Product Characteristics] ① The allowable torques shown in the table are calculated values according to the assumed usage conditions. Please see Page 31 for more details.
② The backlash values shown in the table are the theoretical values for the backlash in the normal direction of a pair of identical gears in mesh.

[Caution on Secondary Operations] ① Please read "Caution on Performing Secondary Operations" (Page 32) when performing modifications and/or secondary operations for safety concerns. KHK Quick-Mod Gears, the KHK's system for quick modification of KHK stock gears is also available.
② Avoid performing secondary operations that narrow the tooth width as it affects precision and strength.



S1K



S5K



To order J Series products, please specify; Catalog No. + J + BORE

Bore H7	* The product shapes of J Series items are identified by background color.															
	15	16	17	18	19	20	22	25	28	30	32	35	40	45	50	
Keyway Js9	5 × 2.3			6 × 2.8				8 × 3.3			10 × 3.3		12 × 3.3		14 × 3.8	
Screw size	M4				M5				M6			M8		M10	—	
Catalog No.																
SUS2.5-15 J BORE																
SUS2.5-16 J BORE																
SUS2.5-18 J BORE																
SUS2.5-20 J BORE																
SUS2.5-22 J BORE																
SUS2.5-24 J BORE																
SUS2.5-25 J BORE																
SUS2.5-28 J BORE																
SUS2.5-30 J BORE																
SUSA2.5-32 J BORE																
SUSA2.5-35 J BORE																
SUSA2.5-36 J BORE																
SUSA2.5-40 J BORE																
SUSA2.5-42 J BORE																
SUSA2.5-45 J BORE																
SUSA2.5-48 J BORE																
SUSA2.5-50 J BORE																
SUSA2.5-55 J BORE																
SUSA2.5-56 J BORE																
SUSA2.5-60 J BORE																
SUSA2.5-64 J BORE																
SUS3-15 J BORE																
SUS3-16 J BORE																
SUS3-18 J BORE																
SUS3-20 J BORE																
SUS3-22 J BORE																
SUS3-24 J BORE																
SUS3-25 J BORE																
SUS3-28 J BORE																
SUS3-30 J BORE																
SUSA3-32 J BORE																
SUSA3-35 J BORE																
SUSA3-36 J BORE																
SUSA3-40 J BORE																
SUSA3-42 J BORE																
SUSA3-45 J BORE																
SUSA3-48 J BORE																
SUSA3-50 J BORE																
SUSA3-55 J BORE																
SUSA3-56 J BORE																
SUSA3-60 J BORE																
SUS4-15 J BORE																
SUS4-20 J BORE																
SUS4-25 J BORE																
SUS4-30 J BORE																
SUSA4-40 J BORE																
SUSA4-50 J BORE																

[Caution on J series] ① As available-on-request products, requires a lead-time for shipping within 2 working days (excludes the day ordered), after placing an order. Please allow additional shipping time to get to your local distributor.
② Number of products we can process for one order is 1 to 20 units. For quantities of 21 or more pieces, we need to quote price and lead time.
③ Keyways are made according to JIS B1301 standards, J9 tolerance.
④ Certain products which would otherwise have a very long tapped hole are counterbored to reduce the length of the tap.
⑤ For products having a tapped hole, a set screw is included.