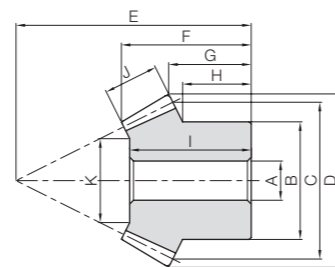
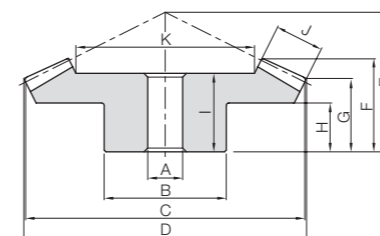




Specifications	
Precision grade	JIS B 1704: 1978 grade 3
Gear teeth	Gleason
Pressure angle	20°
Material	SUS303
Heat treatment	—
Tooth hardness	(less than 187HB)



B3



B4

Catalog Number	Gear Ratio	Module	No. of teeth	Shape	Bore		Hub dia.	Pitch dia.	Outside dia.	Mounting distance	Total length		Hub width
					A _{H7}	B					C	D	
SUB1.5-3020 SUB1.5-2030	1.5	m1.5	30	B4	10	30	45	46.24	28	18.53	13.93	8	
20			B3	8	25	30	33.13	33	18.63	11.54	8.83		
SUB2-3020 SUB2-2030		m2	30	B4	10	35	60	61.65	40	26.87	21.24	15	
20			B3	10	35	40	44.18	45	25.06	16.39	13.33		
SUB2.5-3020 SUB2.5-2030		m2.5	30	B4	15	45	75	77.07	50	34.22	26.55	18	
20			B3	12	40	50	55.22	55	31.06	19.24	14.16		
SUB3-3020 SUB3-2030	m3	30	B4	15	60	90	92.48	55	35.56	26.86	17		
20		B3	15	50	60	66.27	70	40.48	27.09	21.66			
SUB1.5-4020 SUB1.5-2040	2	m1.5	40	B4	10	38	60	60.88	35	25.01	20.88	15	
20			B3	8	25	30	33.61	46	25.54	16.9	14.75		
SUB2-4020 SUB2-2040		m2	40	B4	12	50	80	81.17	45	32.37	26.17	18	
20			B3	12	32	40	44.81	60	34.16	21.2	18		
SUB2.5-4020 SUB2.5-2040		m2.5	40	B4	15	60	100	101.46	55	39.73	31.46	20	
20			B3	12	40	50	56.01	75	43.78	26.5	22.5		
SUB3-4020 SUB3-2040	m3	40	B4	20	70	120	121.76	65	45.85	36.76	24		
20		B3	16	50	60	67.22	90	50.81	31.8	27.5			
SUB1.5-4515 SUB1.5-1545	3	m1.5	45	B4	10	36	67.5	68.06	28	20.44	17.59	11	
15			B3	8	18	22.5	26.54	47	23.19	13.92	12.5		
SUB2-4515 SUB2-1545		m2	45	B4	12	60	90	90.75	40	30.4	26.12	17	
15			B3	10	24	30	35.35	60	29.8	15.89	14		
SUB2.5-4515 SUB2.5-1545		m2.5	45	B4	15	60	112.5	113.43	50	38.35	32.65	22	
15			B3	12	30	37.5	44.18	75	38.41	19.86	17.5		
SUB3-4515 SUB3-1545	m3	45	B4	20	80	135	136.12	55	40.74	34.18	20		
15		B3	15	38	45	53.02	90	45.17	23.84	21.33			

Hole length	Face width	Holding surface dia.	Allowable torque (N·m)		Allowable torque (kgf·m)		Backlash (mm)	Weight (kg)	Catalog Number
			Bending strength	Surface durability	Bending strength	Surface durability			
16 17	9	27.37	3.22	0.46	0.33	0.047	0.05~0.15	0.12 0.064	SUB1.5-3020 SUB1.5-2030
23 22		17.05	2.23	0.31	0.23	0.032			
30 28	11	37.56	7.22	1.08	0.74	0.11	0.06~0.16	0.27 0.16	SUB2-3020 SUB2-2030
31 37		21.34	5.01	0.72	0.51	0.074			
30 28	15	45.61	14.9	2.28	1.52	0.23	0.07~0.17	0.55 0.29	SUB2.5-3020 SUB2.5-2030
31 37		27.42	10.3	1.52	1.05	0.15			
22 24	10	39.64	5.23	0.79	0.53	0.081	0.05~0.15	0.27 0.090	SUB1.5-4020 SUB1.5-2040
27 32		17.28	2.64	0.40	0.27	0.040			
27 32	15	48.46	13.4	2.07	1.36	0.21	0.06~0.16	0.62 0.19	SUB2-4020 SUB2-2040
35 41		20.92	6.72	1.04	0.69	0.11			
38 47	20	60.28	27.1	4.29	2.76	0.44	0.07~0.17	1.24 0.41	SUB2.5-4020 SUB2.5-2040
47		24.56	13.6	2.15	1.39	0.22			
38 47	22	73.81	44.4	7.19	4.53	0.73	0.08~0.18	1.89 0.70	SUB3-4020 SUB3-2040
22.5		29.61	22.4	3.60	2.28	0.37			
17 22.5	10	46.58	5.70	0.72	0.58	0.074	0.05~0.15	0.25 0.041	SUB1.5-4515 SUB1.5-1545
26 29		14.75	1.97	0.24	0.20	0.025			
26 29	15	59.04	14.6	1.90	1.49	0.19	0.06~0.16	0.82 0.097	SUB2-4515 SUB2-1545
35 37		19.13	5.03	0.63	0.51	0.065			
35 37	20	72.84	29.6	3.94	3.02	0.40	0.07~0.17	1.38 0.19	SUB2.5-4515 SUB2.5-1545
43		20.51	10.2	1.31	1.04	0.13			
35 43	23	88.18	49.9	6.77	5.09	0.69	0.08~0.18	2.36 0.34	SUB3-4515 SUB3-1545
22.5		22.53	17.2	2.26	1.76	0.23			

