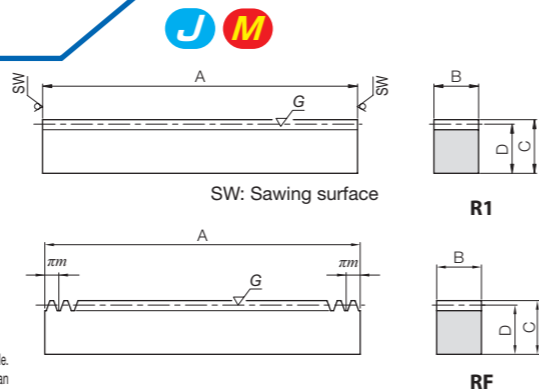


Specifications	
Precision grade	KHK R 001 Grade 3 *
Gear teeth	Standard full depth
Pressure angle	20°
Material	S45C
Heat treatment	Gear teeth induction hardened **
Tooth hardness	50 to 60HRC ***
Surface treatment	Black oxide coated except for teeth

* The precision grade of J Series products is equivalent to the value shown in the table.
 ** Due to the gear teeth being induction hardened, no secondary operations can be performed on tooth areas including the bottom land (approx. 2 to 3 mm).
 *** Products with modules of 0.8 or under use S45C thermal refined materials, so the surface hardness is 200~270 HB.

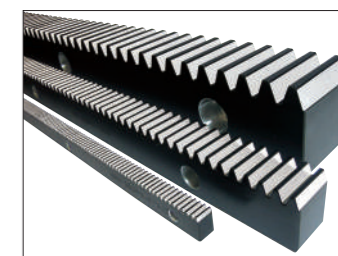
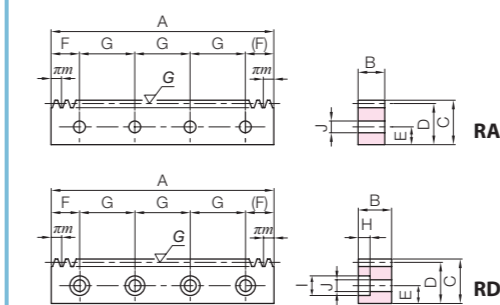


PUS lubricated spur gear



Please see Page 494 for more details.

J Series



Catalog Number	Module	Effective number of teeth	Shape	Total Length/Face width				Allowable force (N)				Backlash (mm)	Weight (kg)
				A	B	C	D	Bending strength	Surface durability	Bending strength	Surface durability		
SRG0.5-100 (Made to Order)	m0.5	61	R1	101	5	12	11.5	293	80.5	29.9	8.21	0~0.11	0.046
SRG0.8-100 (Made to Order)	m0.8	38		101	8	12.3	11.5	751	206	76.6	21.0	0~0.12	0.073
SRG1-100	m1	29	R1	98	10	12	11	862	514	87.9	52.4	0.04~0.19	0.085
SRG1.5-100	m1.5	20		101	15	20	18.5	2160	1360	220	138	0.04~0.19	0.22
SRG2-100	m2	14		98	20	25	23	3830	2410	391	246	0.05~0.21	0.35
SRG2.5-100	m2.5	11	R1	100	25	30	27.5	5990	3770	611	384	0.05~0.21	0.54
SRG3-100	m3	9		101	30	35	32	8620	5420	879	553	0.05~0.21	0.76
SRG4-100	m4	6		98	40	45	41	15300	9640	1560	983	0.05~0.21	1.26
SRG5-110	m5	5	R1	108	50	50	45	24000	15100	2440	1540	0.05~0.22	1.91
SRG6-110	m6	4		111	60	60	54	34500	21700	3520	2210	0.05~0.22	2.82

Catalog Number	Module	No. of teeth	Shape	Total Length/Face width				Allowable force (N)				Backlash (mm)	Weight (kg)
				A	B	C	D	Bending strength	Surface durability	Bending strength	Surface durability		
SRGF0.5-300 (Made to Order)	m0.5	191	RF	300.02	5	12	11.5	293	80.5	29.9	8.21	0~0.11	0.14
SRGF0.8-300 (Made to Order)	m0.8	119		299.08	8	12.3	11.5	751	206	76.6	21.0	0~0.12	0.22
SRGF1-300	m1	96	RF	301.59	10	12	11	862	514	87.9	52.4	0.04~0.19	0.26
SRGF1-500		159		499.51									
SRGF1.5-500	m1.5	106		499.51	15	20	18.5	2160	1360	220	138	0.04~0.19	1.09
SRGF1.5-1000		212		999.03									
SRGF2-500	m2	80		502.65	20	25	23	3830	2410	391	246	0.05~0.21	1.82
SRGF2-1000		160		1005.31									
SRGF2.5-500	m2.5	64		502.65	25	30	27.5	5990	3770	611	384	0.05~0.21	2.71
SRGF2.5-1000		128		1005.31									
SRGF3-500	m3	53		499.51	30	35	32	8620	5420	879	553	0.05~0.21	3.76
SRGF3-1000		106		999.03									
SRGF4-500	m4	40	502.65	40	45	41	15300	9640	1560	983	0.05~0.21	6.47	
SRGF4-1000		80	1005.31										
SRGF5-500	m5	32	502.65	50	50	45	24000	15100	2440	1540	0.05~0.22	8.88	
SRGF5-1000		64	1005.31										
SRGF6-500	m6	26	490.09	60	60	54	34500	21700	3520	2210	0.05~0.22	12.5	
SRGF6-1000		53	999.03										

Catalog Number	Module	No. of teeth	Shape	Total Length	Face width	Height	Height to pitch line	Mounting hole dimensions				
								A	B	C	D	E
SRGFK1-300J	m1	96	RA	301.59	10	12	11	5	20.80	130	3	M4
SRGFK1-500J		159		499.51								
SRGFD1.5-500J	m1.5	106	RD	499.51	15	20	18.5	8	24.76	150	4	M5
SRGFD1.5-1000J		212		999.03					49.51	180	6	
SRGFD2-500J	m2	80		502.65	20	25	23	10	26.33	150	4	M6
SRGFD2-1000J		160		1005.31					52.65	180	6	
SRGFD2.5-500J	m2.5	64		502.65	25	30	27.5	12	26.33	150	4	M8
SRGFD2.5-1000J		128		1005.31					52.65	180	6	
SRGFD3-500J	m3	53		499.51	30	35	32	14	24.76	150	4	M10
SRGFD3-1000J		106		999.03					49.51	180	6	
SRGFD4-500J	m4	40		502.65	40	45	41	18	26.33	150	4	M12
SRGFD4-1000J		80		1005.31					52.65	180	6	
SRGFD5-500J	m5	32	502.65	50	50	45	20	31.33	220	3	M14	
SRGFD5-1000J		64	1005.31					62.65	220	5		
SRGFD6-500J	m6	26	490.09	60	60	54	23	25.04	220	3	M16	
SRGFD6-1000J		53	999.03					59.51	220	5		

Recommended Mating Pinions



SSG Ground Spur Gears

Please see Page 62 for more details.



SSGS Ground Spur Gears

Please see Page 60 for more details.

[Caution on J series] ① Cancellation is not possible for made-to-order products. See page 42 for lead times and allowable order quantities. See page 44 for other precautions.

[Precautions for Made to Order Products] ① Prices and lead times for Made to Order products require separate estimates. Contact your dealer.

Counterbore dimensions			Allowable force (N)		Allowable force (kgf)		Backlash (mm)	Weight (kg)	Catalog Number
H	I	J	Bending strength	Surface durability	Bending strength	Surface durability			
—	—	4.5	862	514	87.9	52.4	0.04~0.19	0.26 0.43	SRGFK1-300J SRGFK1-500J
6	10	6	2160	1360	220	138	0.04~0.19	1.07 2.14	SRGFD1.5-500J SRGFD1.5-1000J
7	11	7	3830	2410	391	246	0.05~0.21	1.78 3.58	SRGFD2-500J SRGFD2-1000J
8.6	14	9	5990	3770	611	384	0.05~0.21	2.64 5.31	SRGFD2.5-500J SRGFD2.5-1000J
10.8	17.5	11	8620	5420	879	553	0.05~0.21	3.63 7.32	SRGFD3-500J SRGFD3-1000J
13	20	14	15300	9640	1560	983	0.05~0.21	6.21 12.6	SRGFD4-500J SRGFD4-1000J
15.2	23	16	24000	15100	2440	1540	0.05~0.22	8.56 17.2	SRGFD5-500J SRGFD5-1000J
17.5	26	18	34500	21700	3520	2210	0.05~0.22	12.0 24.6	SRGFD6-500J SRGFD6-1000J

