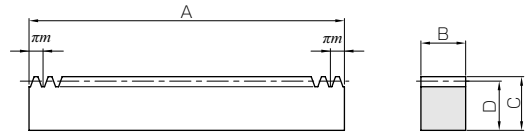




Specifications	
Precision grade	KHK R 001 grade 4
Gear teeth	Standard full depth
Pressure angle	20°
Material	S45C
Heat treatment	—
Tooth hardness	(less than 95HRB)



RF

Catalog No.	Module	No. of teeth	Shape	Total length				Allowable force (N)		Allowable force (kgf)		Weight (kg)	
				A	B	C	D	Bending strength	Surface durability	Bending strength	Surface durability		
SRF0.5-300	m0.5	191	RF	300.02	5	12	11.5	240	39.6	24.4	4.04	0.14	
SRF0.8-300	m0.8	119	RF	299.08	8	12.3	11.5	613	108	62.5	11.0	0.22	
SRF1-300	m1	96	RF	301.59	10	12	11	958	177	97.7	18.0	0.26	
SRF1-500		159		499.51									0.43
SRF1-1000		318		999.03									0.86
SRF1.5-300	m1.5	64	RF	301.59	15	20	18.5	2160	421	220	42.9	0.66	
SRF1.5-500		106		499.51									1.09
SRF1.5-1000		212		999.03									2.18
SRF1.5-1500		320		1507.96									3.28
SRF1.5-2000		435		2049.88									4.47
SRF2-300	m2	48	RF	301.59	20	25	23	3830	775	391	79.0	1.09	
SRF2-500		80		502.65									1.82
SRF2-1000		160		1005.31									3.63
SRF2-1500		240		1507.96									5.45
SRF2-2000		326		2048.31									7.40
SRF2.5-300	m2.5	38	RF	298.45	25	30	27.5	5990	1240	611	127	1.61	
SRF2.5-500		64		502.65									2.71
SRF2.5-1000		128		1005.31									5.43
SRF2.5-1500		192		1507.96									8.14
SRF2.5-2000		261		2049.88									11.1
SRF3-300	m3	32	RF	301.59	30	35	32	8620	1820	879	186	2.27	
SRF3-500		53		499.51									3.76
SRF3-1000		106		999.03									7.53
SRF3-1500		160		1507.96									11.4
SRF3-2000		217		2045.17									15.4
SRF4-500	m4	40	RF	502.65	40	45	41	15300	3330	1560	339	6.47	
SRF4-1000		80		1005.31									12.9
SRF4-1500		120		1507.96									19.4
SRF4-2000		163		2048.31									26.4
SRF5-500	m5	32	RF	502.65	50	50	45	24000	5300	2440	540	8.88	
SRF5-1000		64		1005.31									17.8
SRF5-1500		96		1507.96									26.6
SRF5-2000		130		2042.04									36.1
SRF6-500	m6	26	RF	490.09	60	60	54	34500	7740	3520	789	12.5	
SRF6-1000		53		999.03									25.4
SRF6-1500		80		1507.96									38.4
SRF6-2000		108		2035.75									51.8
SRF8-500	m8	20	RF	502.66	75	75	67	44200	10400	4510	1060	19.8	
SRF8-1000		40		1005.31									39.7
SRF10-1000	m10	32	RF	1005.31	90	80	70	66300	16100	6770	1640	49.7	

[Caution on Product Characteristics]

- ① The allowable forces shown in the table are the calculated values according to the assumed usage conditions. Please see Page 189 for more details.
- ② The backlash of racks differ depending on the size of the mating pinion. Please calculate the backlash from the backlash value of the mating pinion. Also, please refer to the data in the section called 'Backlash of Rack Tooth (Amount of Tooth Thinning)' on Page 191.

[Caution on Secondary Operations]

- ① Please read "Caution on Performing Secondary Operations" (Page 192) when performing modifications and/or secondary operations for safety concerns. KHK Quick-Mod Gears, the KHK's system for quick modification of KHK stock gears is also available.
- ② If gear tooth hardening, or thermal refining, is applied, the decarburization layer (approx. 0.5 mm thickness) on the rectangular surfaces cannot have the hardness you designate.