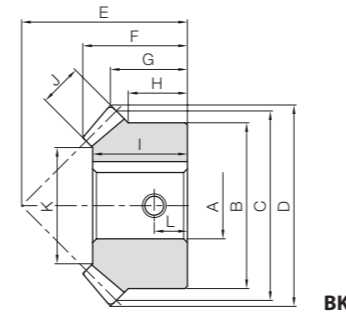
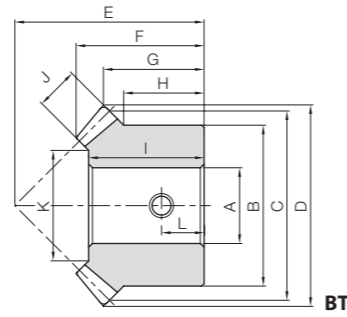




Specifications	
Precision grade	JIS B 1704: 1978 grade 4
Gear teeth	Gleason
Pressure angle	20°
Helix angle	—
Material	S45C
Heat treatment	Gear teeth induction hardened
Tooth hardness	50 to 60HRC
Surface treatment	Black oxide coating



Catalog Number	Gear Ratio	Module	No. of teeth	Shape	Bore		Hub dia.	Pitch dia.	Outside dia.	Mounting distance	Total length	Crown to back		Hub width	Hole length
					AH7	B						C	F		
SMA1-20 SMB1-20	1	m1	20	BT	8	16	20	21.41	20	13.95	10.71	8	12	8	12
10					26	30									
SMA1.5-20 SMB1.5-20		m1.5		BK	10	26	30	32.12	30	21.24	16.06	13	19	13	19
12					30	40	42.83	37	24.89	18.41	14	22			
SMA2-20 SMB2-20		m2		BK	14	34	40	42.83	37	24.89	18.41	14	22	14	22
15					42	50	53.54	48	32.54	24.77	19	29			
SMA2.5-20 SMB2.5-20		m2.5		BK	18	42	50	53.54	48	32.54	24.77	19	29	19	29
20					50	60	64.24	58	39.84	30.12	23	35			
SMA3-20 SMB3-20 SMC3-20		m3		BK	22	50	60	64.24	58	39.84	30.12	23	35	23	35
25					60	80	85.65	75	50.78	37.83	27	45			
SMA4-20 SMB4-20 SMC4-20	m4	BK	30	64	80	85.65	75	50.78	37.83	27	45	27	45		
32			80	100	107.07	90	60.38	43.54	30	54					
SMA5-20 SMB5-20 SMC5-20	m5	BK	40	80	100	107.07	90	60.38	43.54	30	54	30	54		
30			100	125	132.07	100	60.82	41.04	25	50					
SMA1-25	1	m1	25	BT	10	20	25	26.41	23	15.16	11.21	8	14	8	14
SMA1.5-25					12	30	37.5	39.62	34	22.25	16.31	11.5	19		
SMA2-25 SMB2-25		m2		18	40	50	52.83	40	24.33	16.41	10	20	10	20	
15				50	62.5	66.04	50	30.41	20.52	12.5	26				
SMA2.5-25 SMB2.5-25		m2.5		BK	20	50	62.5	66.04	50	30.41	20.52	12.5	26	12.5	26
18					60	75	79.24	60	37.81	24.62	15	32			
SMA3-25 SMB3-25		m3		BK	30	60	75	79.24	60	37.81	24.62	15	32	15	32
25					75	100	105.66	80	49.32	32.83	20	43			
SMA4-25 SMB4-25		m4		BK	35	80	100	105.66	80	49.32	32.83	20	43	20	43
30					100	125	132.07	100	60.82	41.04	25	50			
SMA5-25	m5	BK	50	100	125	132.07	100	60.82	41.04	25	50	25	50		
30			125	150	157.07	120	68.56	48.54	35	62					
SMA1-30	1	m1	30	BK	12	24	30	31.41	28	17.71	13.71	10	16	10	16
SMA1.5-30					15	36	45	47.12	43	28.24	21.56	16	25		
SMA2-30 SMB2-30		m2		20	45	60	62.83	50	29.42	21.41	12.5	25	12.5	25	
15				60	75	78.54	62	36.28	26.27	17	32				
SMA2.5-30 SMB2.5-30		m2.5		BK	25	60	75	78.54	62	36.28	26.27	17	32	17	32
20					75	90	94.24	75	45.47	32.12	20	40			
SMA3-30 SMB3-30		m3		BK	32	70	90	94.24	75	45.47	32.12	20	40	20	40
25					90	120	125.66	95	54.52	37.83	25	50			
SMA4-30 SMB4-30		m4		BK	40	100	120	125.66	95	54.52	37.83	25	50	25	50
30					120	150	157.07	120	68.56	48.54	35	62			
SMA5-30	m5	BK	55	130	150	157.07	120	68.56	48.54	35	62	35	62		
30			150	180	187.07	150	81.28	58.54	45	72					

Face width	Holding surface dia.	Keyway	Socket head screw	Allowable torque (N·m)		Allowable torque (kgf·m)		Backlash (mm)	Weight (kg)	Catalog Number
				Bending strength	Surface durability	Bending strength	Surface durability			
J	K	Width × Depth	Size	L						
5	9.86 10	—	M4	4	0.90	0.37	0.091	0.038	0.016 0.014	SMA1-20 SMB1-20
8	15.37	—	M4 M5	6.5	3.13	1.31	0.32	0.13	0.069 0.06	SMA1.5-20 SMB1.5-20
10	21.72	4 × 1.8	M5	7	7.17	3.05	0.73	0.31	0.14 0.13	SMA2-20 SMB2-20
12	28.06	5 × 2.3 5 × 2.3	M5	7	7.17	3.05	0.73	0.31	0.14 0.13	SMA2-20 SMB2-20
12	28.06	5 × 2.3* 6 × 2.8	M6	9.5	13.7	5.90	1.39	0.60	0.27 0.26	SMA2.5-20 SMB2.5-20
15	31.57	7 × 3* 7 × 3* 6 × 2.8	M6 M8 M6	11.5	24.2	10.5	2.47	1.08	0.47 0.44 0.49	SMA3-20 SMB3-20 SMC3-20
20	43.43	7 × 3* 10 × 3.3 8 × 3.3	M8	13.5	57.3	25.4	5.85	2.59	1.00 0.96 1.07	SMA4-20 SMB4-20 SMC4-20
26	54.46	10 × 3.3* 8 × 3.3 10 × 3.3	M8	15	114	51.3	11.7	5.23	1.80 2.04 1.93	SMA5-20 SMB5-20 SMC5-20
6	15.03	—	M4	4	1.48	0.71	0.15	0.072	0.029	SMA1-25
9	19.54	4 × 1.8	M5	5.75	4.98	2.44	0.51	0.25	0.10	SMA1.5-25
12	26.06	6 × 2.8 5 × 2.3	M6 M5	5	11.8	5.90	1.20	0.60	0.19 0.20	SMA2-25 SMB2-25
15	34.57	5 × 2.3* 6 × 2.8	M6	6	23.1	11.7	2.35	1.19	0.39 0.40	SMA2.5-25 SMB2.5-25
20	37.43	7 × 3* 8 × 3.3	M8	7.5	42.3	21.6	4.31	2.20	0.63 0.69	SMA3-25 SMB3-25
25	55.29	10 × 3.3 8 × 3.3	M8	10	96.8	50.2	9.87	5.12	1.59 1.68	SMA4-25 SMB4-25
30	65.15	12 × 3.3*	M8	12.5	185	96.8	18.8	9.87	2.86	SMA5-25
6	19.03	4 × 1.8	M5	5	2.00	1.11	0.20	0.11	0.047	SMA1-30
10	25.71	5 × 2.3	M5	8	7.22	4.08	0.74	0.42	0.19	SMA1.5-30
12	36.06	6 × 2.8 5 × 2.3	M6 M5	6.25	16.0	9.20	1.63	0.94	0.32 0.35	SMA2-30 SMB2-30
15	47.57	8 × 3.3 6 × 2.8	M8 M6	8.5	31.2	18.2	3.19	1.86	0.68 0.73	SMA2.5-30 SMB2.5-30
20	53.43	10 × 3.3 8 × 3.3	M8	10	57.8	34.0	5.89	3.46	1.15 1.25	SMA3-30 SMB3-30
25	79.29	12 × 3.3 8 × 3.3	M8	12.5	131	78.3	13.4	7.99	2.81 3.03	SMA4-30 SMB4-30
30	99.15	16 × 4.3	M10	17.5	250	150	25.5	15.3	5.56	SMA5-30

