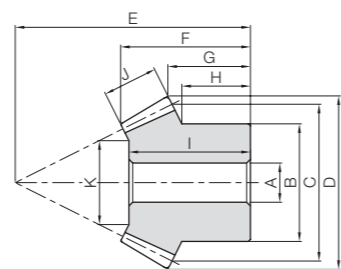
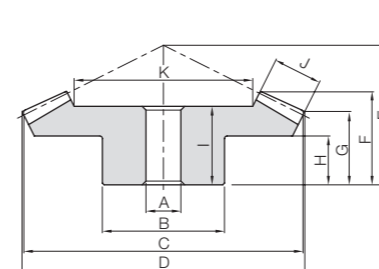




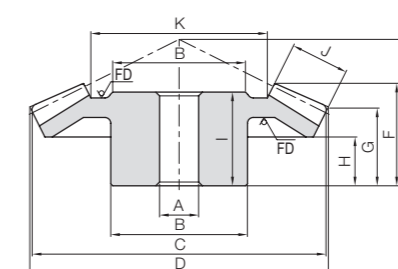
Specifications	
Precision grade	JIS B 1704: 1978 grade 3
Gear teeth	Gleason
Pressure angle	20°
Material	S45C
Heat treatment	—
Tooth hardness	(less than 194HB)
Surface treatment	Black oxide coating



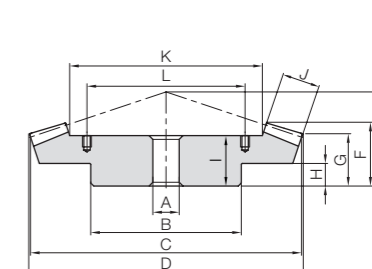
B3



B4



B5



BT

* FD has a forged finish surface.

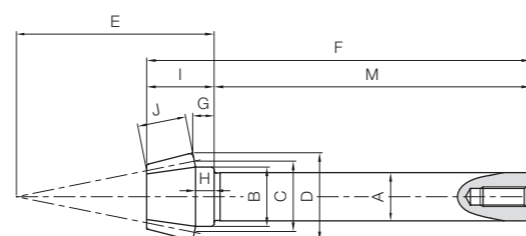
Catalog Number	Gear Ratio	Module	No. of teeth	Shape	Bore		Pitch dia.	Outside dia.	Mounting distance	Total length	Crown to back		Hub width
					A _{H7}	B					C	D	
SB1.5-6015 SB1.5-1560	4	m1.5	60	B4	12	50	90	90.41	32	24.2	21.58	12	
15			B3	8	18	22.5	26.66	56	23.01	11.52	10.43		
SB2-6015 SB2-1560		m2	60	B4	15	60	120	120.55	42	31.6	28.1	16	
15			B3	10	24	30	35.55	75	31.01	15.69	14.25		
SB2.5-6015 SB2.5-1560		m2.5	60	B4	20	70	150	150.69	53	40	35.63	20	
15			B3	12	30	37.5	44.44	94	39.02	19.87	18.06		
SB3-6015 SB3-1560		m3	60	B4	20	80	180	180.83	64	47.97	43.15	25	
15			B3	15	38	45	53.33	112	44.1	23.04	21.12		
SB4-6015 SB4-1560		m4	60	B5	25	85	240	241.1	80	59.2	52.2	36	
15			B3	16	50	60	71.1	150	62.03	31.4	28.75		
SBY5-6015 SBY5-1560		m5	60	BT	30	180	300	301.36	80	53.97	45.22	20	
15			B3	25	60	75	88.9	185	75.03	36.74	33.13		
SBY6-6015 SBY6-1560	m6	60	BT	35	200	360	361.66	100	68.16	58.31	25		
15		B3	25	75	90	106.66	220	85.17	42.08	38.13			

Hole length	Face width	Holding surface dia.	Allowable torque (N·m)		Allowable torque (kgf·m)		Backlash (mm)	Weight (kg)	Catalog Number
			Bending strength	Surface durability	Bending strength	Surface durability			
21	12	65.38	17.3	1.75	1.77	0.18	0.05~0.15	0.62	SB1.5-6015 SB1.5-1560
22.5			4.46	0.44	0.45	0.045			
27	16	87.02	41.3	4.30	4.21	0.44	0.06~0.16	1.35	SB2-6015 SB2-1560
30			10.6	1.07	1.08	0.11			
34	20	108.64	80.2	8.54	8.18	0.87	0.07~0.17	2.51	SB2.5-6015 SB2.5-1560
37.5			20.6	2.13	2.10	0.22			
41	22	134.4	130	14.2	13.3	1.44	0.08~0.18	4.16	SB3-6015 SB3-1560
43			33.5	3.54	3.42	0.36			
53	32	174.03	328	37.0	33.5	3.77	0.12~0.27	6.00	SB4-6015 SB4-1560
60			84.5	9.24	8.62	0.94			
45	40	218.79	642	74.4	65.4	7.59	0.14~0.34	17.5	SBY5-6015 SBY5-1560
73			165	18.6	16.8	1.90			
56	45	267.73	1050	126	107	12.8	0.16~0.36	30.7	SBY6-6015 SBY6-1560
82			270	31.5	27.5	3.21			

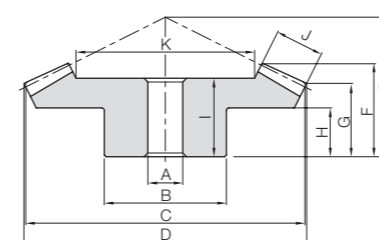


Specifications	
Precision grade	JIS B 1704: 1978 grade 3
Gear teeth	Gleason
Pressure angle	20°
Material	S45C
Heat treatment	—*
Tooth hardness	(less than 194HB)*
Surface treatment	Black oxide coating

* The pinion is tempered and has the teeth hardness of 200 to 270 HB.



B8



B4

Catalog Number	Gear Ratio	Module	No. of teeth	Shape	Bore/Shaft Dia.		Pitch dia.	Outside dia.	Mounting distance	Total length	Crown to back	Hub width	Length of bore and shaft
					A _{H7} (bore)	A _{H7} (shaft)							
SB1.5-6012 SB1.5-1260	5	m1.5	60	B4	12	50	90	90.33	30	23.89	21.82	12	21
12			B8	12.2	15	18	22.24	50	97.06	5.42	4.7	17.06	
SB2-6012 SB2-1260		m2	60	B4	15	60	120	120.43	40	31.85	29.09	16	27
12			B8	15.2	20	24	29.65	66	117.08	6.56	5.6	22.08	
SB2.5-6012 SB2.5-1260		m2.5	60	B4	20	70	150	150.54	50	39.81	36.36	20	34
12			B8	20.2	25	30	37.06	83	143.1	8.7	7.5	28.1	
SB3-6012 SB3-1260	m3	60	B4	20	80	180	180.65	60	47.43	43.64	25	41	
12		B8	25.25	30	36	44.48	100	172.19	10.85	9.4	32.19		

Face width	Holding surface dia.	Length of shaft	Socket head screw Size	Allowable torque (N·m)		Allowable torque (kgf·m)		Backlash (mm)	Weight (kg)	Catalog Number
				Bending strength	Surface durability	Bending strength	Surface durability			
12	65.52	80	M5	18.0	1.41	1.83	0.14	0.05~0.15	0.62	SB1.5-6012 SB1.5-1260
				4.01	0.46	0.41	0.047			
16	86.96	95	M6	42.6	3.43	4.34	0.35	0.06~0.16	1.34	SB2-6012 SB2-1260
				9.50	1.12	0.97	0.11			
20	108.8	115	M8	83.2	6.85	8.48	0.70	0.07~0.17	2.54	SB2.5-6012 SB2.5-1260
				18.5	2.23	1.89	0.23			
22	134.73	140	M8	135	11.4	13.8	1.16	0.08~0.18	4.18	SB3-6012 SB3-1260
				30.1	3.70	3.07	0.38			

