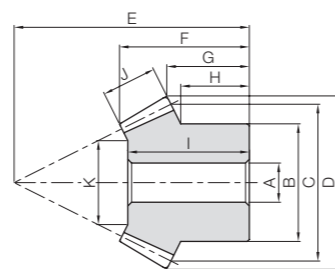


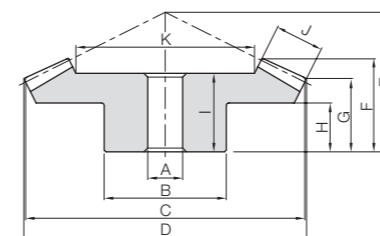


Specifications	
Precision grade	JIS B 1704: 1978 grade 4*
Gear teeth	Gleason
Pressure angle	20°
Material	MC901
Heat treatment	—
Tooth hardness	(115 to 120HRR)

* The precision grade is equivalent to the value shown in the table.



B3



B4

Catalog Number	Gear Ratio	Module	No. of teeth	Shape	Bore		Pitch dia.	Outside dia.	Mounting distance	Total length	Crown to back		Hub width
					A	B					C	D	
PB1.5-3020	1.5	m1.5	30	B4	10	30	45	46.24	28	18.53	13.93	8	
PB1.5-2030			20	B3	8	25	30	33.13	33	18.63	11.54	8.83	
PB2-3020		m2	30	B4	10	35	60	61.65	40	26.87	21.24	15	
PB2-2030			20	B3	10	35	40	44.18	45	25.06	16.39	13.33	
PB1-4020	2	m1	40	B4	8	25	40	40.59	22	15.07	12.59	8	
PB1-2040			20	B3	6	16	20	22.41	28	13.78	8.6	7	
PB1.25-4020		m1.25	40	B4	10	32	50	50.73	27	18.54	15.23	10	
PB1.25-2040			20	B3	8	22	25	28.01	36	18.66	11.75	10.25	
PB1.5-4020		m1.5	40	B4	10	38	60	60.88	35	25.01	20.88	15	
PB1.5-2040			20	B3	8	25	30	33.61	46	25.54	16.9	14.75	
PB2-4020		m2	40	B4	12	40	80	81.17	45	32.37	26.17	18	
PB2-2040			20	B3	12	32	40	44.81	60	34.16	21.2	18	
PB1.5-4515	3	m1.5	45	B4	10	40	67.5	68.06	28	20.44	17.59	11	
PB1.5-1545			15	B3	8	18	22.5	26.54	47	23.19	13.92	12.5	
PB2-4515		m2	45	B4	12	60	90	90.75	40	30.4	26.12	17	
PB2-1545			15	B3	10	24	30	35.35	60	29.8	15.89	14	

[Caution on Product Characteristics] ① To reduce heat generation, it is recommended to mate plastic gears with steel gears.

Hole length	Face width	Holding surface dia.	Allowable torque (N·m)		Allowable torque (kgf·m)		Backlash (mm)	Weight (kg)	Catalog Number
			Bending strength	Surface durability	Bending strength	Surface durability			
16	9	27.37	1.61	—	0.16	—	0~0.25	0.018	PB1.5-3020
17		17.05	0.87	0.089	—	0.0093			
23	11	37.56	3.65	—	0.37	—	0~0.26	0.039	PB2-3020
22		21.34	1.97	0.20	—	0.024			
12	6	26.58	0.74	—	0.075	—	0~0.23	0.010	PB1-4020
12		9.17	0.28	0.028	—	0.0029			
16	8	33.61	1.50	—	0.15	—	0~0.24	0.021	PB1.25-4020
17		13.22	0.56	0.058	—	0.0068			
22	10	39.64	2.66	—	0.27	—	0~0.25	0.039	PB1.5-4020
24		17.28	1.00	0.10	—	0.013			
27	15	48.46	6.72	—	0.69	—	0~0.26	0.076	PB2-4020
32		20.92	2.52	0.26	—	0.028			
17	10	46.58	3.18	—	0.32	—	0~0.25	0.040	PB1.5-4515
22.5		14.75	0.68	0.070	—	0.0061			
26	15	59.04	8.07	—	0.82	—	0~0.26	0.12	PB2-4515
29		19.13	1.73	0.18	—	0.014			

* In regard to MC Nylon gears, other materials are available for plastic gears, including Ultra High Molecular Weight Polyethylene (U-PE), which has excellent abrasion resistance and resin conforming to the Plastic Implementation Measure (PIM). A single piece order is acceptable and will be produced as a custom-made gear. Please see Page 26 for more details on quotations and orders.

