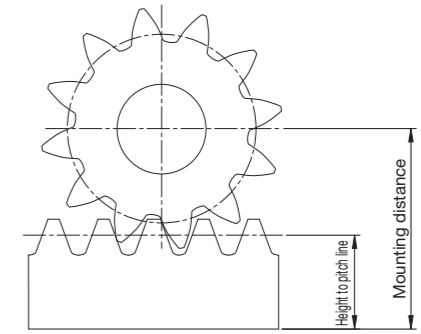
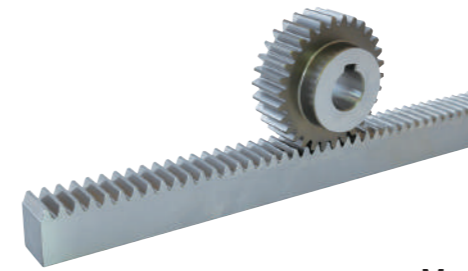
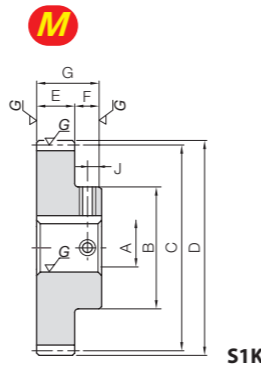




Specifications	
Precision grade	JIS grade N5 (JIS B1702-1: 1998)
Gear teeth	Standard full depth
Pressure angle	20°
Material	SCM415
Heat treatment	Carburized
Tooth hardness	55 to 60HRC



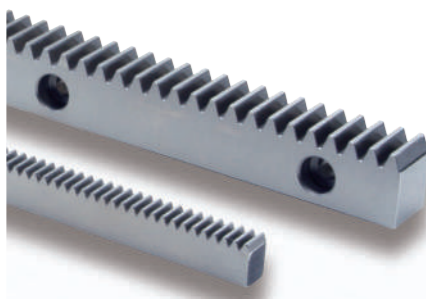
Mounting distance of a profile shifted gear and the meshing rack

Catalog Number	Pitch mm (Module)	No. of teeth	Profile shift coefficient	Mounting distance	Shape	Bore		Pitch dia.	Outside dia.	Face width	Hub width	Total length
						A _{H7}	B					
MSCPG5-20A (Made to Order) MSCPG5-20B (Made to Order)	CP5 (1.5915)	20	+0.425	35	S1K	12	28	31.83	36.37	15	15	30
15												
MSCPG5-25A (Made to Order) MSCPG5-25B (Made to Order)		25	+0.438	39		12	35	39.79	44.37			
15												
MSCPG5-30A (Made to Order) MSCPG5-30B (Made to Order)	30	+0.451	43	15	40	47.75	52.37					
20												
MSCPG5-40A (Made to Order) MSCPG5-40B (Made to Order) MSCPG5-40C (Made to Order)	40	+0.478	51	15	45	63.66	68.37					
20												
MSCPG10-20A (Made to Order) MSCPG10-20B (Made to Order)	CP10 (3.1831)	20	+0.111	64	S1K	20	50	63.66	70.73	30	20	50
25												
MSCPG10-25A (Made to Order) MSCPG10-25B (Made to Order)		25	+0.124	72		25	60	79.58	86.73			
30												
MSCPG10-30A (Made to Order) MSCPG10-30B (Made to Order)	30	+0.137	80	30	70	95.49	102.73					
40												
MSCPG10-40A (Made to Order) MSCPG10-40B (Made to Order)	40	+0.164	96	30	70	127.32	134.73					
40												

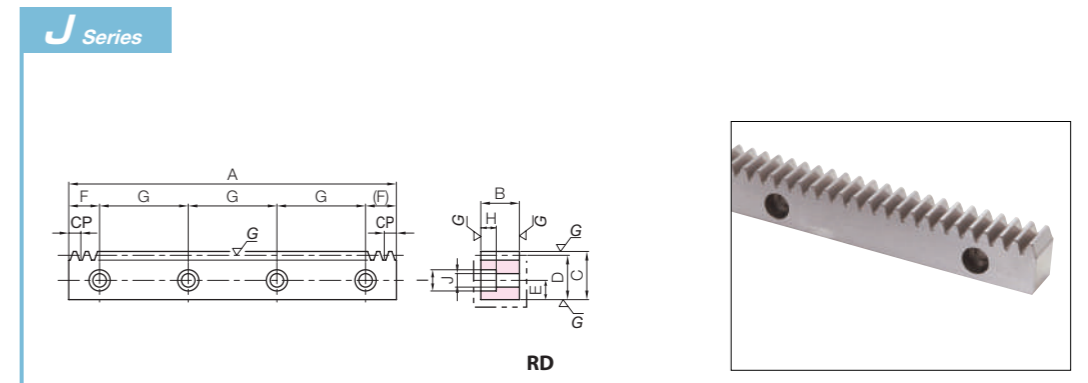
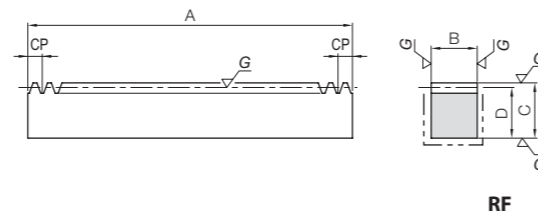
Keyway Width × Depth	Socket head screw Size	J	Distance traveled in one turn (mm)	Allowable torque (N·m)		Allowable torque (kgf·m)		Backlash (mm)	Weight (kg)	Catalog Number
				Bending strength	Surface durability	Bending strength	Surface durability			
4x 1.8 5x 2.3	M4	7.5	100	70.0	46.7	7.13	4.76	0.04~0.14	0.14 0.13	MSCPG5-20A (Made to Order) MSCPG5-20B (Made to Order)
4x 1.8 5x 2.3	M4			125	91.8	78.2	9.37		7.97	0.24 0.22
5x 2.3 6x 2.8	M4 M5		150	114	119	11.6	12.2		0.32 0.29	MSCPG5-30A (Made to Order) MSCPG5-30B (Made to Order)
5x 2.3 6x 2.8 8x 3.3	M4 M5 M6			200	159	229	16.2		23.4	0.53 0.50 0.45
6x 2.8 8x 3.3	M5 M6	10	200		514	375	52.4	38.2	0.94 0.87	MSCPG10-20A (Made to Order) MSCPG10-20B (Made to Order)
8x 3.3	M6			250	689	628	70.3	64.1	1.43 1.34	MSCPG10-25A (Made to Order) MSCPG10-25B (Made to Order)
8x 3.3 12x 3.3	M6 M8		300		868	960	88.5	97.9	2.03 1.80	MSCPG10-30A (Made to Order) MSCPG10-30B (Made to Order)
8x 3.3 12x 3.3	M6 M8			400	1230	1850	126	188	3.36 3.13	MSCPG10-40A (Made to Order) MSCPG10-40B (Made to Order)

[Precautions for Made to Order Products] Prices and lead times for Made to Order products require separate estimates. Contact your dealer.

MRGCPF/MRGCPFD Circular pitch 5, 10
CP Hardened Ground Racks



Specifications	
Precision grade	KHK R 001 Grade 1*
Gear teeth	Standard full depth
Pressure angle	20°
Material	SCM415
Heat treatment	Tooth area carburized
Tooth hardness	55 to 60HRC



Catalog Number	Pitch mm (Module)	No. of teeth	Shape	Total Length				Allowable force (N)				Backlash (mm)	Weight (kg)
				A	B	C	D	Bending strength	Surface durability	Bending strength	Surface durability		
MRGCPF5-500	CP5 (1.5915)	100	RF	500	15	20	18.41	5380	5000	548	509	0.04~0.14	1.08
MRGCPF10-500	CP10 (3.1831)	50	RF	500	30	35	31.82	21500	20100	2190	2050	0.05~0.16	3.75

Surface durability is 4 times higher than SRGCP Hardened Ground Racks, 2 times higher than KRGCP-H Hardened Ground Racks.

Catalog Number	Pitch mm (Module)	No. of teeth	Shape	Total Length				Mounting hole dimensions				
				A	B	C	D	E	F	G	No. of holes	Screw size
● MRGCPFD5-500J	CP5 (1.5915)	100	RD	500	15	20	18.41	8	25	150	4	M5
● MRGCPFD10-500J	CP10 (3.1831)	50	RD					14				

Counterbore dimensions			Allowable force (N)		Allowable force (kgf)		Backlash (mm)	Weight (kg)	Catalog Number
H	I	J	Bending strength	Surface durability	Bending strength	Surface durability			
6	10	6	5380	5000	548	509	0.04~0.14	1.06	● MRGCPFD5-500J
10.8	17.5	11	21500	20100	2190	2050	0.05~0.16	3.61	● MRGCPFD10-500J