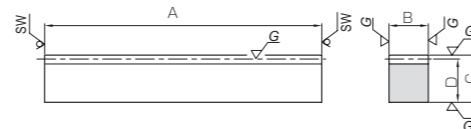


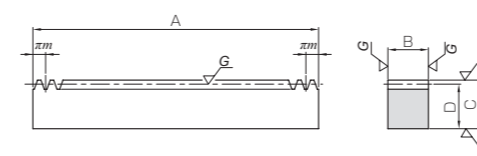
Specifications	
Precision grade	KHK R 001 grade 1
Gear teeth	Standard full depth
Pressure angle	20°
Material	SCM440
Heat treatment	Thermal refining only
Tooth hardness	225 ~ 285HB



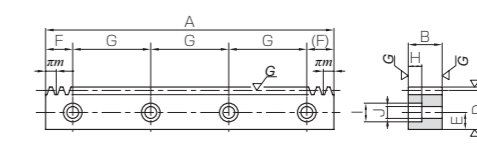
SW: Sawing surface

R1

KRGD



RF



RD

* Ground racks with these specifications: up to Module 10, Total length (A) up to 1500 mm, and Heights of (C) 120 mm or less, are also available by request as custom-made products.

Catalog No.	Module	Effective no. of teeth	Shape	Total length				Allowable force (N)		Allowable force (kgf)		Weight (kg)
				A	B	C	D	Bending strength	Surface durability	Bending strength	Surface durability	
KRG1-100 KRG1-500	m1	29 159	R1	98 505	10	15	14	1530	641	156	65.3	0.11 0.55
KRG1.5-100 KRG1.5-500	m1.5	20 105	R1	101 505	15	20	18.5	3450	1440	352	147	0.22 1.10
KRG2-100 KRG2-500	m2	14 79	R1	98 505	20	25	23	6130	2560	625	261	0.35 1.82
KRG2.5-100 KRG2.5-500	m2.5	11 63	R1	100 505	25	30	27.5	9580	4010	977	408	0.54 2.73
KRG3-100 KRG3-500	m3	9 52	R1	101 505	30	35	32	13800	5770	1410	588	0.76 3.81

Catalog No.	Module	No. of teeth	Shape	Total length				Allowable force (N)		Allowable force (kgf)		Weight (kg)
				A	B	C	D	Bending strength	Surface durability	Bending strength	Surface durability	
KRGF1-1000 KRGF1.5-1000	m1 m1.5	318 212	RF	999.03 999.03	10 15	15 20	14 18.5	1530 3450	641 1440	156 352	65.3 147	1.49 2.18
KRGF2-1000 KRGF2.5-1000	m2 m2.5	160 128	RF	1005.31 1005.31	20 25	25 30	23 27.5	6130 9580	2560 4010	625 977	261 408	3.63 5.43
KRGF3-1000	m3	106	RF	999.03	30	35	32	13800	5770	1410	588	7.53

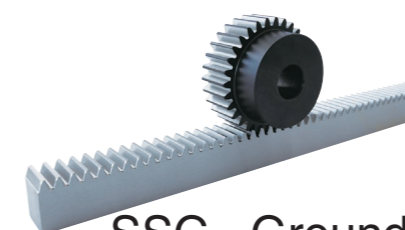
Catalog No.	Module	No. of teeth	Shape	Total length				Mounting hole dimensions			No. of mounting holes	Mounting screw size
				A	B	C	D	E	F	G		
KRGD1-500 KRGD1.5-500	m1 m1.5	159 106	RD	499.51 499.51	10 15	15 20	14 18.5	6 8	39.75 39.75	140 140	4 4	M4 M5
KRGD2-500 KRGD2.5-500	m2 m2.5	80 64	RD	502.65 502.65	20 25	25 30	23 27.5	10 12	41.32 41.32	140 140	4 4	M6 M8
KRGD3-500	m3	53	RD	499.51	30	35	32	14	39.75	140	4	M10

- [Caution on Product Characteristics]
- The allowable forces shown in the table are the calculated values according to the assumed usage conditions. Please see Page 190 for more details.
 - The backlash of racks differ depending on the size of the mating pinion. Please calculate the backlash from the backlash value of the mating pinion. Also, please refer to the data in the section called 'Backlash of Rack Tooth (Amount of Tooth Thinning)' on Page 193.
 - After attaching the racks to the base, please fasten with dowel pins. Clamping only with mounting screws could possibly cause the screws to be broken, due to a heavy load. For details, please see the assembly method to the mounting base on Page 195.

- [Caution on Secondary Operations]
- Please read "Caution on Performing Secondary Operations" (Page 194) when performing modifications and/or secondary operations for safety concerns. KHK Quick-Mod Gears, the KHK's system for quick modification of KHK stock gears is also available.

Counterbore dimensions			Allowable force (N)		Allowable force (kgf)		Weight (kg)	Catalog No.
H	I	J	Bending strength	Surface durability	Bending strength	Surface durability		
5	8	4.5	1530	641	156	65.3	0.54	KRGD1-500
6	10	6	3450	1440	352	147	1.06	KRGD1.5-500
7	11	7	6130	2560	625	261	1.77	KRGD2-500
8.6	14	9	9580	4010	977	408	2.62	KRGD2.5-500
10.8	17.5	11	13800	5770	1410	588	3.59	KRGD3-500

Recommended Mating Pinions



SSG Ground Spur Gears

Please see Page 42 for more details.