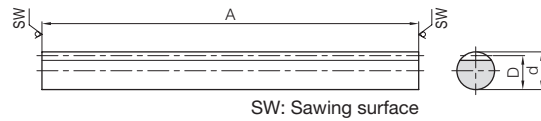




Specifications	
Precision grade	KHK R 001 grade 4
Gear teeth	Standard full depth
Pressure angle	20°
Material	S45C
Heat treatment	—
Tooth hardness	(less than HB210)
Surface treatment	Black oxide coating

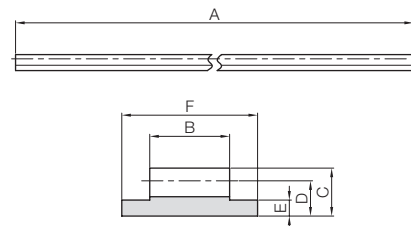


R2

Catalog Number	Pitch mm (Module)	Effective number of teeth	Shape	Total Length		Outside dia.	Height to pitch line	Allowable force (N)		Allowable force (kgf)		Backlash (mm)	Weight (kg)
				A	d _h			D	Bending strength	Surface durability	Bending strength		
SROCP2.5-500	CP2.5 (0.7958)	200	R2	505	10	9.2	474	91.8	48.3	9.36	0.00~0.14	0.30	
SROCP5-500	CP5 (1.5915)	99		505	15	13.41	1650	324	169	33.1	0.09~0.25	0.65	
SROCP10-1000	CP10 (3.1831)	99		1010	30	26.82	6610	1300	674	132	0.14~0.35	5.16	



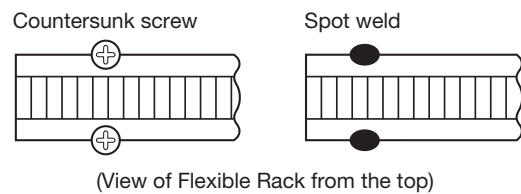
Specifications	
Precision grade	KHK R 001 grade 8
Gear teeth	Standard full depth
Pressure angle	20°
Material	SS400
Heat treatment	—
Tooth hardness	(less than 187HB)
Surface treatment	Black oxide coating



R3

Catalog Number	Pitch mm (Module)	Shape	Total Length		Face width	Height	Height to pitch line	Base thickness	Base width	Allowable force (N)		Weight (kg)
			A	B						C	D	
FRCP5-2000	CP5 (1.5915)	R3	2000	10	6	4.41	2	17	801	81.7	0.91	
FRCP5-3000			3000									
FRCP5-4000			4000									

■ Installation Example of FRCP Metal Flex Rack



Recommended Mating Pinions



SSCP

Please see Page 290 for more details.

Miter Gears

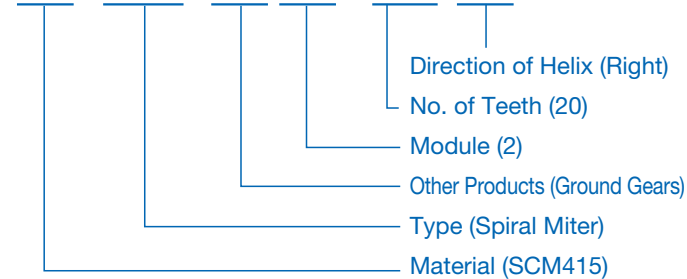
MMSGQ Ground Spiral Miter Gears	MMSG Ground Spiral Miter Gears	SMSG Ground Spiral Miter Gears	MMSA/MMSB Finished Bore Spiral Miter Gears	MMS Spiral Miter Gears	SMS Spiral Miter Gears	SMA/SMB/SMC Finished Bore Miter Gears
NEW	✓	✓	✓		NEW	✓
Material: SCM415 m2-4 Page 310	Material: SCM415 m2-4 Page 312	Material: S45C m1-5 Page 314	Material: SCM415 m1-10 Page 316	Material: SCM415 m2-5 Page 318	Material: S45C m1-8 Page 320	Material: S45C m1-8 Page 322
MM Miter Gears	LM Sintered Metal Miter Gears	SM Miter Gears	SAM Angular Miter Gears	SUM Stainless Steel Miter Gears	SUMA Finished Bore Stainless Steel Miter Gears	PM Plastic Miter Gears
NEW	✓	NEW	✓			
Material: SCM415 m2-5 Page 324	Material: SMF5040 m0.8-1.5 Page 324	Material: S45C m1-8 Page 326	Material: S45C m1.5-3 Page 328	Material: SUS303 m1-4 Page 330	Material: SUS303 m1-4 Page 330	Material: MC901 m1-4 Page 332
DM Injection Molded Miter Gears	BB Sintered Metal Bushings	Nissei KSP Ground Spiral Miter				
Material: Duracon (R) (M90-44) m0.5-1.5 Page 332	Material: Oil-free copper alloy φ5-8 Page 334	Material: SCM415 m1.5-6 Page 370				

Catalog Number of KHK Stock Gears

The Catalog Number for KHK stock gears is based on the simple formula listed below. Please order KHK gears by specifying the Catalog Numbers.

(Example) Miter Gears

M MS G 2 - 20 R



Material		Type	
S	S45C	M	Straight Miter Gears
M	SCM415	MS	Spiral Miter Gears
SU	Stainless Steel	AM	Angular Miter Gears
L	Sintered Metal Alloy	Other Information	
P	MC901	G, GQ	Ground Gears
D	Polyacetal		