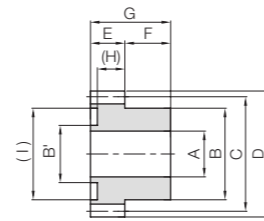




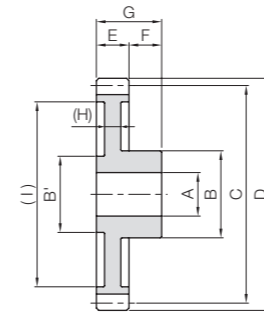
Specifications	
Precision grade	JIS grade N12 (JIS B1702-1: 1998)*
Gear teeth	Standard full depth
Pressure angle	20°
Material	Duracon (R) (M90-44)**
Heat treatment	—
Tooth hardness	(110 to 120HRR)

* The precision grade of these products is equivalent to the value shown in the table.

** "Duracon (R)" is a registered trademark of Polyplastics Co., Ltd. in Japan as well as other countries.



S8B



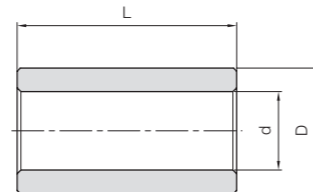
S9

Catalog Number	Module	No. of teeth	Shape	Bore 1	Bore 2	Hub dia. 1	Hub dia. 2	Pitch dia.	Outside dia.	Face width	Hub width
				A	(A')	B	B'	C	D	E	F
DS1-12	m1	12	S8B	4	—	8	6	12	14	6	6
DS1-16		10				8	16	18			
DS1-18		10				8	18	20			
DS1-20		11.7				9	20	22			
DS1-24		5	11.7	9	24	26					
DS1-28			11.7	9	28	30					
DS1-30		6	14	12	30	32					
DS1-32			14	12	32	34					
DS1-35			14	12	35	37					
DS1-36			14	12	36	38					
DS1-40		8	16	14	40	42					
DS1-48			16	14	48	50					
DS1-50			16	14	50	52					
DS1-60			18	15.6	60	62					
DS1-64			18	15.6	64	66					
DS1-70			18	15.6	70	72					
DS1-80	18		15.6	80	82						

Total Length	Web thickness	Web O.D.	Hole depth	Allowable torque (N·m)	Allowable torque (kgf·m)	Backlash (mm)	Weight (g)	Catalog Number
G	(H)	(I)	(J)	Bending strength	Bending strength	0~0.60		
12	(5.5)	(8.5)	—	0.44	0.045	1.10	DS1-12	
		(11.5)		0.71	0.073	1.87	DS1-16	
		(13.5)		0.83	0.085	2.15	DS1-18	
		(15)		0.96	0.098	2.85	DS1-20	
		(17)		1.22	0.12	3.81	DS1-24	
		(23)		1.48	0.15	4.39	DS1-28	
14	(3)	(24)	1.61	0.16	5.46	DS1-30		
		(26.5)	1.75	0.18	5.86	DS1-32		
		(29)	1.96	0.20	6.73	DS1-35		
		(30)	2.04	0.21	7.01	DS1-36		
		(34)	2.33	0.24	8.39	DS1-40		
		(40)	2.92	0.30	12.0	DS1-48		
		(42.5)	3.07	0.31	12.6	DS1-50		
		(52.5)	3.78	0.39	17.6	DS1-60		
(56.5)	4.07	0.41	19.4	DS1-64				
14	(3)	(62.5)	4.50	0.46	22.4	DS1-70		
		(72.5)	5.23	0.53	27.9	DS1-80		



When using the injection molded spur gear with an idler gear (bearing metal press fitting) and diameter smaller than the inside diameter of the molded gear, please press fit the following standard bushing.



T8

Catalog Number	Inner dia.	Outside dia.	Length	Gear example
	d ^{+0.02} ₀	D ^{+0.02} _{-0.01}	L ⁰ _{-0.3}	
BB30507	3	5	7	DS0.5
BB30608	3	6	8	DS0.5, DS0.8
BB40609	4	6	9	DS0.8
BB40612	4	6	12	DS1
BB50812	5	8	12	DS1
BB50814	5	8	14	DS1

Material: Oil-free copper alloy



■ Dimensional tolerance of molded item (unit: mm)

Dimensional classification	Grade	Rough grade
	3 or less	±0.20
4 to 6	±0.25	
7 to 10	±0.30	
11 to 18	±0.35	
19 to 30	±0.40	
Over 30	±0.50	