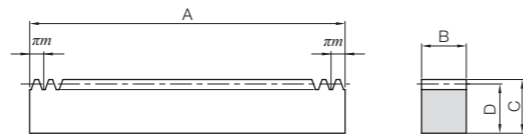


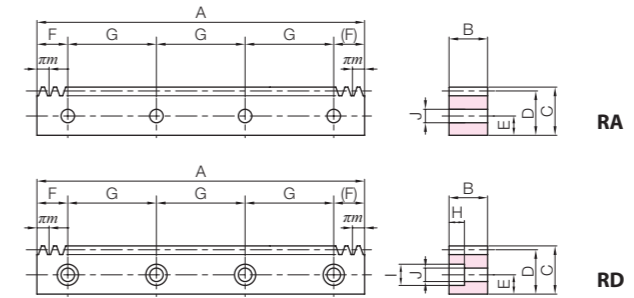
Specifications	
Precision grade	KHK R 001 Grade 5 *
Gear teeth	Standard full depth
Pressure angle	20°
Material	Polyacetal
Heat treatment	—
Tooth hardness	(115 to 120HRR)

\* The precision grade of J Series products is equivalent to the value shown in the table.



RF

J Series

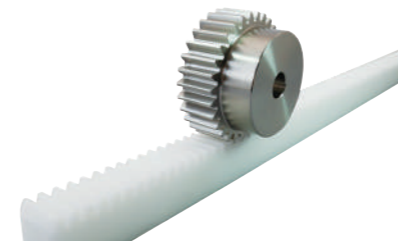


Catalog Number	Module	No. of teeth	Shape	Total Length	Face width	Height	Height to pitch line	Allowable force (N)	Allowable force (kgf)	Backlash (mm)	Weight (kg)
				A	B	C	D	Bending strength	Bending strength		
<b>DRF1-500</b>	<b>m1</b>	159	RF	499.51	10	12	11	80.7	8.23	0.15~0.36	0.077
<b>DRF1.5-500</b> <b>DRF1.5-1000</b>	<b>m1.5</b>	106 212		499.51 999.03	15	20	18.5	182	18.5	0.18~0.39	0.20 0.39
<b>DRF2-500</b> <b>DRF2-1000</b>	<b>m2</b>	80 160		502.65 1005.31	20	25	23	323	32.9	0.21~0.42	0.33 0.65
<b>DRF2.5-500</b> <b>DRF2.5-1000</b>	<b>m2.5</b>	64 128		502.65 1005.31	25	30	27.5	504	51.4	0.23~0.46	0.49 0.98
<b>DRF3-500</b> <b>DRF3-1000</b>	<b>m3</b>	53 106		499.51 999.03	30	35	32	726	74.1	0.28~0.52	0.68 1.35

Catalog Number	Module	No. of teeth	Shape	Total Length	Face width	Height	Height to pitch line	Mounting hole dimensions				
				A	B	C	D	E	F	G	No. of holes	Screw size
● <b>DRFK1-500J</b>	<b>m1</b>	159	RA	499.51	10	12	11	5	24.76	150	4	M4
● <b>DRFD1.5-500J</b> ● <b>DRFD1.5-1000J</b>	<b>m1.5</b>	106 212	RD	499.51 999.03	15	20	18.5	8	24.76 49.51	150 180	4 6	M5
● <b>DRFD2-500J</b> ● <b>DRFD2-1000J</b>	<b>m2</b>	80 160		502.65 1005.31	20	25	23	10	26.33 52.65	150 180	4 6	M6
● <b>DRFD2.5-500J</b> ● <b>DRFD2.5-1000J</b>	<b>m2.5</b>	64 128		502.65 1005.31	25	30	27.5	12	26.33 52.65	150 180	4 6	M8
● <b>DRFD3-500J</b> ● <b>DRFD3-1000J</b>	<b>m3</b>	53 106		499.51 999.03	30	35	32	14	24.76 49.51	150 180	4 6	M10

Counterbore dimensions			Allowable force (N)	Allowable force (kgf)	Backlash (mm)	Weight (kg)	Catalog Number
H	I	J	Bending strength	Bending strength			
—	—	4.5	80.7	8.23	0.15~0.36	0.077	● <b>DRFK1-500J</b>
6	10	6	182	18.5	0.18~0.39	0.19 0.38	● <b>DRFD1.5-500J</b> ● <b>DRFD1.5-1000J</b>
7	11	7	323	32.9	0.21~0.42	0.32 0.64	● <b>DRFD2-500J</b> ● <b>DRFD2-1000J</b>
8.6	14	9	504	51.4	0.23~0.46	0.47 0.95	● <b>DRFD2.5-500J</b> ● <b>DRFD2.5-1000J</b>
10.8	17.5	11	726	74.1	0.28~0.52	0.65 1.31	● <b>DRFD3-500J</b> ● <b>DRFD3-1000J</b>

**Recommended Mating Pinions**



**SUS/SUSA Stainless Steel Spur Gears**

Please see Page 154 for more details.