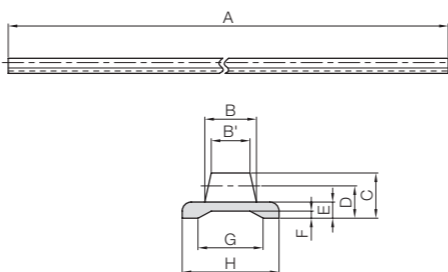


Specifications	
Precision grade	KHK R 001 grade 8
Gear teeth	Standard full depth
Pressure angle	20°
Material	Duracon (R) (M25-44)
Heat treatment	—
Tooth hardness	(110 to 120HRR)

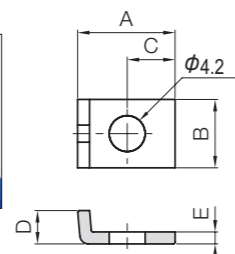
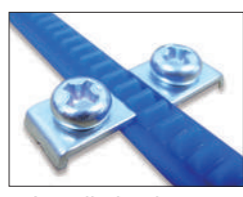
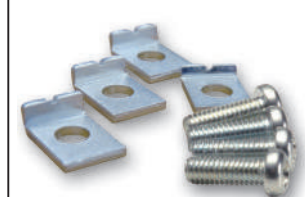
* "Duracon (R)" is a registered trademark of Polyplastics Co., Ltd. in Japan as well as other countries.



R4

Catalog Number	Module	Shape	Dimensions (mm)									
			Total Length A	Face width B	Face width B'	Height C	Height to pitch line D	Base thickness E	Base groove depth F	Base groove width G	Base width H	
DR0.8-2000	m0.8	R4	2000	3.8	3	3.3	2.5	1.5	0.7	3.7	8	
DR1-2000	m1			5	4	4.3	3.3	2	0.9	4.9	10	
DR1.5-2000	m1.5			6.5	5	5.7	4.2	2.3	1	8	12	
DR2-2000	m2			8	6	7	5	2.5	1.1	10.1	15	

DR dedicated SRS Rack Clamps



T7

Material: SPCC trivalent chromate finish

Catalog Number	Shape	A	B	C	D	E	F	Weight (g)
SRS-1	T7	10.2	8	4.5	2.7	1.2	—	2.24
SRS-2	T7	11.4	8	5.6	3.9	1.4	—	2.52

Dimensional tolerance of DR / molded item (unit: mm)

Dimensional classification	Grade	Rough grade
3 or less	±0.20	
4 to 6	±0.25	
7 to 10	±0.30	
11 to 18	±0.35	
19 to 30	±0.40	
Over 30	±0.50	

SRS/ARL / Normal dimensional tolerance of bending and drawing (unit: mm)

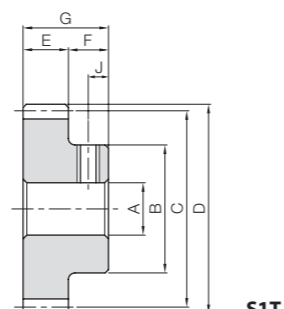
Dimensional classification	Grade	Grade B
6 or less	±0.30	
7 to 30	±0.50	
31 to 120	±0.80	
120 to 400	±1.20	
400 to 1000	±2.00	
1000 to 2000	±3.00	

SSDR Module 0.8, 1, 1.5, 2 DR Pinions



Specifications	
Precision grade	JIS grade N8 (JIS B1702-1:1998)*
Gear teeth	Standard full depth
Pressure angle	20°
Material	S45C
Heat treatment	—
Tooth hardness	(less than 194HB)
Surface treatment	Black oxide coating

* The precision grade of products with a module of less than 0.8 is equivalent to the value shown in the table.



S1T

Catalog Number	Module	No. of teeth	Shape	Dimensions (mm)								Socket head screw	
				Bore AH7	Hub dia. B	Pitch dia. C	Outside dia. D	Face width E	Hub width F	Total length G	Size	J	
SSDR0.8-35	m0.8	35	S1T	5	16	28	29.6	3	7	10	M4	3.5	
SSDR1-30	m1	30		6	20	30	32	4	8	12	M4	4	
SSDR1.5-20	m1.5	20		6	20	30	33	5	10	15	M4	5	
SSDR2-15	m2	15		8	22	30	34	6	10	16	M5	5	

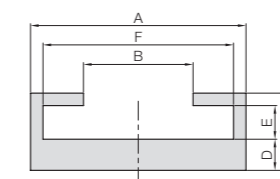
List of Products for DR Molded Flexible Racks

Molded Flexible Racks	Rack Clamps	Slide Rails	Dedicated Pinions
DR0.8-2000	SRS-1	ARL-0.8	SSDR0.8-35
DR1-2000	SRS-1	ARL-1	SSDR1-30
DR1.5-2000	SRS-2	ARL-1.5	SSDR1.5-20
DR2-2000	SRS-2	ARL-2	SSDR2-15

Allowable force (N)	Allowable force (kgf)	Weight (kg)	Catalog Number
Bending strength	Bending strength		
112	11.4	0.036	DR0.8-2000
161	16.4	0.060	DR1-2000
161	16.5	0.085	DR1.5-2000
265	27.0	0.12	DR2-2000

* Molded flexible racks of 2 meters or longer are also available by request as custom-made products.
(Only the length can be changed, up to 50 m)

DR dedicated ARL Slide Rails



T6

Material: Aluminum (A6063S-T5) Overall length: 1,000 mm

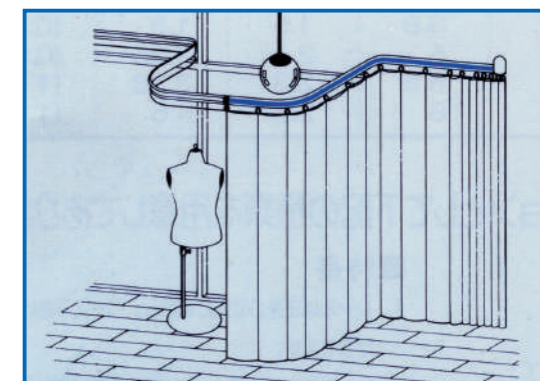
Catalog Number	Shape	A	B	C	D	E	F	Weight (kg)
ARL-0.8	T6	10.3	4.4	4.7	2	1.7	8.3	0.081
ARL-1		12.3	5.6	5.2	2	2.2	10.3	0.096
ARL-1.5		14.3	7.2	5.5	2	2.5	12.3	0.11
ARL-2		17.3	8.8	6.2	2.5	2.7	15.3	0.15

Steel Spur Gears

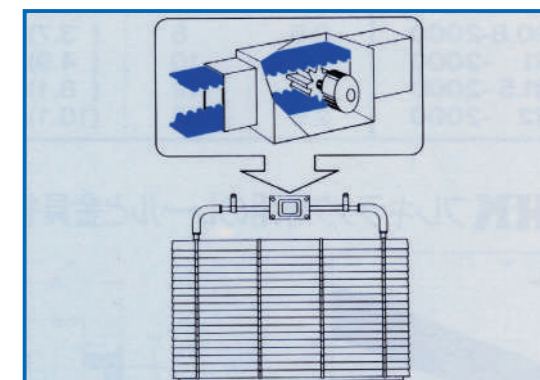
Allowable torque (N-m)	Allowable torque (kgf-m)	Weight (g)	Catalog Number
Bending strength	Bending strength		
2.59	0.26	23.5	SSDR0.8-35
4.46	0.45	38.6	SSDR1-30
7.35	0.75	48.4	SSDR1.5-20
10.4	1.06	56.1	SSDR2-15

Applications for DR Molded Flexible Racks

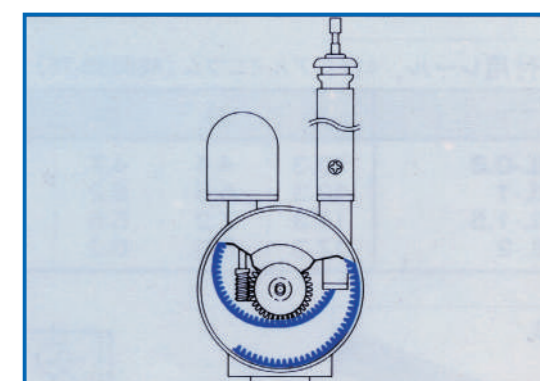
As it is possible to fix the position of the pinion and bend the DR molded flexible racks into any shape, they can be used for special purposes.



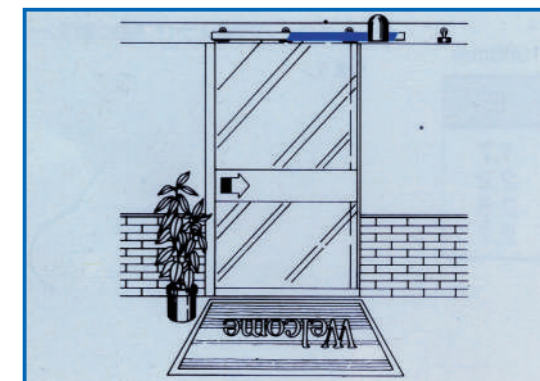
Electric curtain



Electric blinds



Electric antenna



Automatic doors