

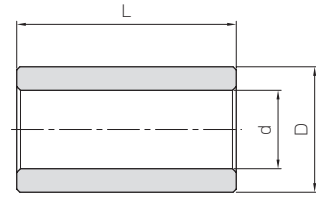


# BB Sintered Metal Bushings

## Sintered Metal Bushings



The table shows a series of standard metal bushings that can be pressed into standard Injection Molded Gears. They can be used as bearing metal on idler gears or to reduce the bore of the gears.



T8

Catalog No.	I.D. of bushing	O.D. of bushing	Total Length	Products that can use the bushing
	$d \begin{smallmatrix} +0.02 \\ 0 \end{smallmatrix}$	$D \begin{smallmatrix} +0.02 \\ -0.01 \end{smallmatrix}$	$L \begin{smallmatrix} 0 \\ -0.3 \end{smallmatrix}$	
<b>BB30507</b>	3	5	7	DM0.8
<b>BB30608</b>	3	6	8	DM1
<b>BB40609</b>	4	6	9	DM1
<b>BB50814</b>	5	8	14	DM1.5

Material : Oil impregnated sintered bronze.



- Spur Gears
- Helical Gears
- Internal Gears
- Racks
- CP Racks & Pinions
- Miter Gears
- Bevel Gears
- Screw Gears
- Worm Gear Pairs
- Bevel Gearboxes
- Other Products