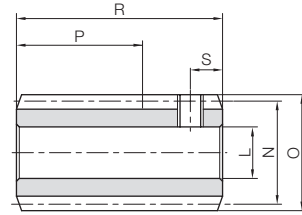




Specifications	
Precision grade	KHK W 001 grade 4
Reference section of gear	Normal plane
Gear teeth	Standard full depth
Normal pressure angle	20°
Material	S45C
Heat treatment	—
Tooth hardness	(less than 194HB)
Surface treatment	Black oxide coating

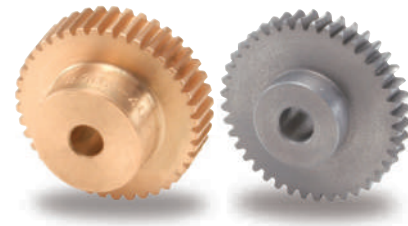


W2

Catalog Number	Normal module	Number of Starts	Nominal lead angle	Direction of helix	Shape	Bore		Hub dia.	Pitch dia.	Outside dia.	Face width	Hub width (right)	Hub width (left)
						L <sub>H7(H8)</sub>	M						
SW1-R1 SW1-R2	m1	1 2	3°35' 7°11'	R	W2	6 <sup>H8</sup>	—	—	16	18	(20)	—	—
SW1.25-R1 SW1.25-R2	m1.25	1 2	3°25' 6°50'	R	W2	8	—	—	21	23.5	(25)	—	—

Total length R	Socket head screw		Weight (kg)	Catalog Number
	Size	S		
32	M4	5	0.043	SW1-R1 SW1-R2
37	M5	5	0.085	SW1.25-R1 SW1.25-R2

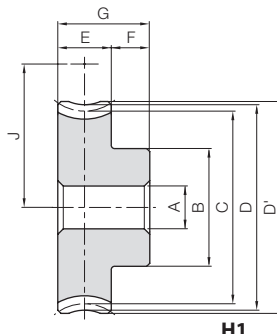
BG/CG Module 1, 1.25  
Worm Wheels



Specifications	
Catalog Number	BG CG
Precision grade	KHK W 002 grade 4*
Reference section of gear	Normal plane
Gear teeth	Standard full depth
Normal pressure angle	20°
Material	CAC502 (old JIS PBC2) FC200**
Heat treatment	—
Tooth hardness	—

\* The precision grade of J Series products is equivalent to the value shown in the table.  
\*\* FC200's tensile strength (200N/mm<sup>2</sup>) is derived from test specimens and differs according to the product shape.

A <sub>H7</sub>	Bore
B	Hub dia.
C	Pitch dia.
D	Throat dia.
D'	Outside dia.
E	Face width
F	Hub width
G	Total length
J	Mounting distance



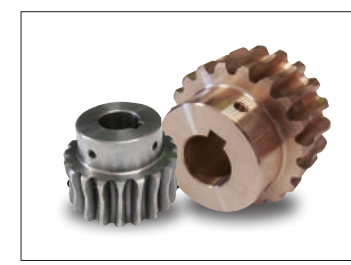
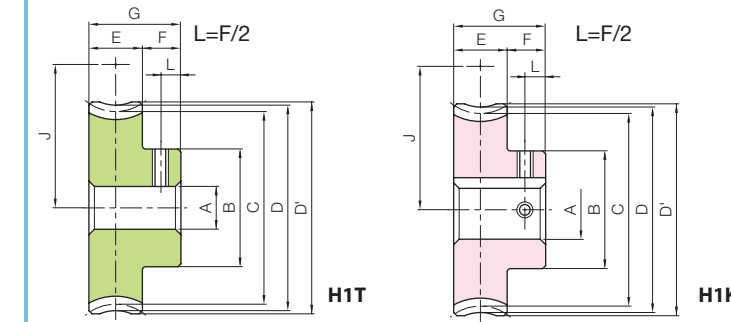
H1

NOTE 1: Allowable torque based on worm speed (rpm)

Catalog Number	Reduction ratio	No. of teeth	No. of starts of mating worm	Lead angle helix direction	Shape	A <sub>H7</sub>	B	C	D	D'	E	F	G	J	Allowable torque (N·m) NOTE 1						Backlash (mm)	Weight (kg)
															30 rpm	100 rpm	300 rpm	600 rpm	900 rpm	1200 rpm		
BG1-20R1	20	20	1	3°35'	R	H1	6	16	20.05	22	23	—	—	18	1.89	1.58	1.26	1.04	0.92	0.85	0.06~0.24	0.043
BG1-20R2	10	20	2	7°11'	R	H1	6	16	20.16	22	23	—	—	18	1.90	1.54	1.18	0.97	0.85	0.78	0.06~0.24	0.043
BG1-30R1	30	30	1	3°35'	R	H1	6	20	30.07	32	33	10	10	23	4.00	3.38	2.74	2.29	2.05	1.87	0.06~0.24	0.089
BG1-30R2	15	30	2	7°11'	R	H1	6	20	30.24	32	33	—	—	23	4.03	3.35	2.62	2.14	1.91	1.74	0.06~0.24	0.089
BG1-40R1	40	40	1	3°35'	R	H1	8	26	40.08	42	43	—	—	28	6.85	5.79	4.76	4.03	3.61	3.31	0.06~0.24	0.15
BG1-50R1	50	50	1	3°35'	R	H1	8	30	50.10	52	53	—	—	33	10.3	8.76	7.27	6.18	5.58	5.14	0.06~0.24	0.23
BG1.25-20R1	20	20	1	3°25'	R	H1	6	20	25.04	27.5	28.75	—	—	23	3.19	2.65	2.10	1.72	1.53	1.40	0.08~0.26	0.070
BG1.25-20R2	10	20	2	6°50'	R	H1	6	20	25.18	27.5	28.75	—	—	23	3.19	2.58	1.96	1.60	1.40	1.27	0.08~0.26	0.070
BG1.25-30R1	30	30	1	3°25'	R	H1	6	25	37.57	40	41.25	11	9	29.25	6.75	5.67	4.56	3.81	3.40	3.09	0.08~0.26	0.15
BG1.25-30R2	15	30	2	6°50'	R	H1	6	25	37.77	40	41.25	—	—	29.25	6.77	5.60	4.33	3.54	3.16	2.85	0.08~0.26	0.15
BG1.25-40R1	40	40	1	3°25'	R	H1	8	30	50.09	52.5	53.75	—	—	35.5	11.5	9.71	7.92	6.70	5.98	5.47	0.08~0.26	0.24
BG1.25-50R1	50	50	1	3°25'	R	H1	8	40	62.61	65	66.25	—	—	41.75	17.4	14.7	12.1	10.3	9.25	8.49	0.08~0.26	0.40
CG1-60R1	60	60	1	3°35'	R	H1	10	30	60.12	62	63	—	—	38	8.69	7.39	6.14	5.24	4.78	4.39	0.06~0.24	0.25
CG1-80R1	80	80	1	3°35'	R	H1	10	35	80.16	82	83	—	—	48	14.7	12.6	10.5	9.11	8.30	7.72	0.06~0.24	0.43
CG1-100R1	100	100	1	3°35'	R	H1	10	40	100.20	102	103	—	—	58	21.9	19.0	16.0	13.9	12.7	11.9	0.06~0.24	0.66
CG1-120R1	120	120	1	3°35'	R	H1	10	40	120.24	122	123	—	—	68	30.5	26.7	22.5	19.6	18.0	16.7	0.06~0.24	0.91

Bronze Worm Wheels & Gray Iron Worm Wheels

J Series



To order J Series products, please specify: **Catalog No. + J + BORE.**

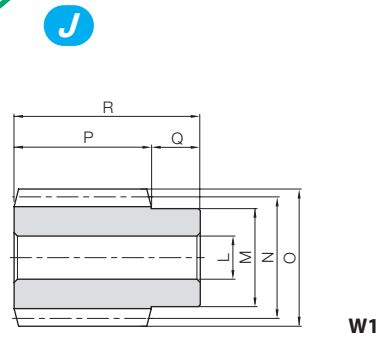
Bore H7	* The product shapes of J Series items are identified by background color.											
	6	8	10	12	14	15	16	17	18	19	20	22
Keyway J <sub>S9</sub>	—											
Screw size	4x1.8			5x2.3				6x2.8				
Catalog Number	M4	M5	M4				M5					
BG1-20R1 J BORE	H1T											
BG1-20R2 J BORE	H1T											
BG1-30R1 J BORE	H1T	H1T										
BG1-30R2 J BORE	H1T	H1T										
BG1-40R1 J BORE		H1T	H1K	H1K								
BG1-50R1 J BORE		H1T	H1K	H1K	H1K	H1K	H1K	H1K				
BG1.25-20R1 J BORE	H1T	H1T										
BG1.25-20R2 J BORE	H1T	H1T										
BG1.25-30R1 J BORE	H1T	H1T	H1K	H1K								
BG1.25-30R2 J BORE	H1T	H1T	H1K	H1K								
BG1.25-40R1 J BORE		H1T	H1K	H1K	H1K	H1K	H1K	H1K				
BG1.25-50R1 J BORE		H1T	H1K	H1K	H1K	H1K	H1K	H1K	H1K	H1K		
CG1-60R1 J BORE			H1K	H1K	H1K	H1K	H1K	H1K				
CG1-80R1 J BORE			H1K	H1K	H1K	H1K	H1K	H1K	H1K	H1K		
CG1-100R1 J BORE			H1K	H1K	H1K	H1K	H1K	H1K	H1K	H1K	H1K	
CG1-120R1 J BORE			H1K	H1K	H1K	H1K	H1K	H1K	H1K	H1K	H1K	H1K





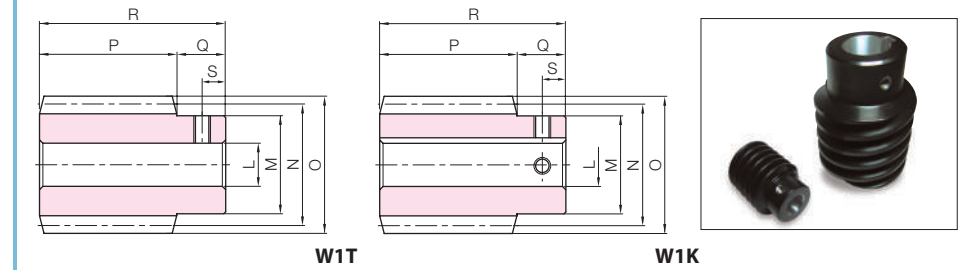
Specifications	
Precision grade	KHK W 001 grade 4*
Reference section of gear	Normal plane
Gear teeth	Standard full depth
Normal pressure angle	20°
Material	S45C
Heat treatment	—
Tooth hardness	(less than 194HB)
Surface treatment	Black oxide coating

\* The precision grade of J Series products is equivalent to the value shown in the table.



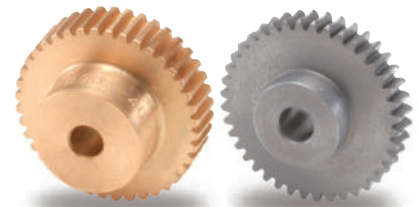
Catalog Number ● : J Series (Available-on-request)	Normal module	Number of Starts	Nominal lead angle	Direction of helix	Shape	Bore		Hub dia.	Pitch dia.	Outside dia.	Face width	Hub width (right)	Hub width (left)
						L <sub>H7</sub>	M						
<b>SW1.5-R1</b> ● <b>SW1.5-R1J8</b> ● <b>SW1.5-R1J10</b>	m1.5	1	3°26'	R	W1	8	20	25	28	30	10	—	
W1T					8								
<b>SW1.5-R2</b> ● <b>SW1.5-R2J8</b> ● <b>SW1.5-R2J10</b>	m1.5	2	6°54'	R	W1	8	20	25	28	30	10	—	
W1T					8								
					W1K	10							

J Series



Total length R	Keyway Width × Depth	Socket head screw		Weight (kg)	Catalog Number ● : J Series (Available-on-request)
		Size	S		
40	—	—	—	0.12	<b>SW1.5-R1</b> ● <b>SW1.5-R1J8</b> ● <b>SW1.5-R1J10</b>
		M5	5	0.12	
	4 x 1.8	M4	5	0.11	<b>SW1.5-R2</b> ● <b>SW1.5-R2J8</b> ● <b>SW1.5-R2J10</b>
		—	—	0.12	
		M5	5	0.12	
		M4	5	0.11	

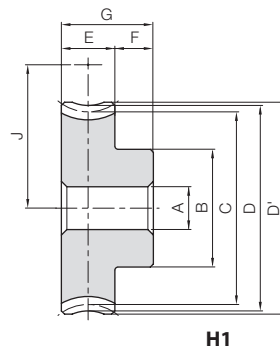
BG/CG Module 1.5  
Worm Wheels



Specifications	
Catalog Number	BG CG
Precision grade	KHK W 002 grade 4*
Reference section of gear	Normal plane
Gear teeth	Standard full depth
Normal pressure angle	20°
Material	CAC502 (old JIS PBC2) FC200**
Heat treatment	—
Tooth hardness	—

\* The precision grade of J Series products is equivalent to the value shown in the table.  
\*\* FC200's tensile strength (200N/mm<sup>2</sup>) is derived from test specimens and differs according to the product shape.

A <sub>H7</sub>	Bore
B	Hub dia.
C	Pitch dia.
D	Throat dia.
D'	Outside dia.
E	Face width
F	Hub width
G	Total length
J	Mounting distance

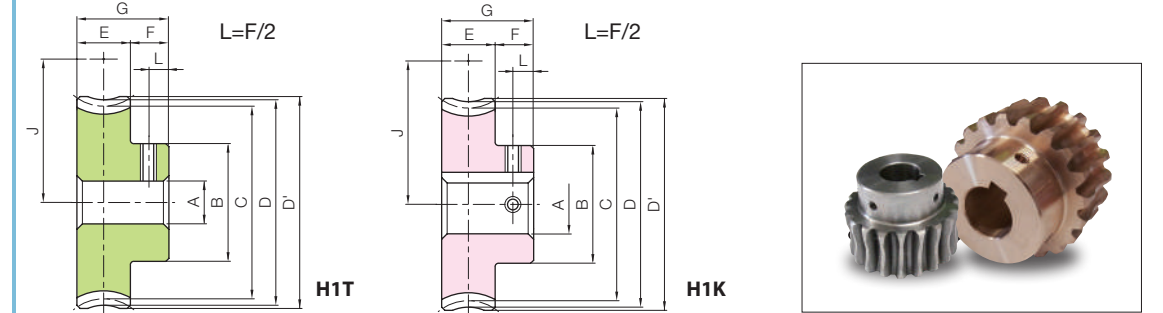


Catalog Number	Reduction ratio	No. of teeth	No. of starts of mating worm	Lead angle helix direction	Shape	A <sub>H7</sub>	B	C	D	D'	E	F	G	J	Allowable torque (N·m) NOTE 1							Backlash (mm)	Weight (kg)
															30 rpm	100 rpm	300 rpm	600 rpm	900 rpm	1200 rpm			
															30	100	300	600	900	1200			
<b>BG1.5-20R1</b>	20	20	1	3°26'	R	H1	8	22	30.05	33	34.5	12	22	27.5	4.76	3.96	3.10	2.56	2.27	2.06	0.08~0.26	0.10	
<b>BG1.5-20R2</b>	10	20	2	6°54'			8	22	30.22	33	34.5	12	22	27.5	4.75	3.85	2.89	2.38	2.08	1.87			
<b>BG1.5-30R1</b>	30	30	1	3°26'	R	H1	10	30	45.08	48	49.5	12	22	35	10.1	8.47	6.72	5.67	5.03	4.55	0.08~0.26	0.22	
<b>BG1.5-30R2</b>	15	30	2	6°54'			10	30	45.33	48	49.5	12	22	35	10.1	8.37	6.40	5.26	4.67	4.20			
<b>BG1.5-40R1</b>	40	40	1	3°26'	R	H1	12	30	60.11	63	64.5	12	22	42.5	17.2	14.5	11.7	9.96	8.86	8.04	0.08~0.26	0.35	
<b>BG1.5-50R1</b>	50	50	1	3°26'			12	40	75.13	78	79.5	14	24	50	30.4	25.6	20.8	17.8	16.0	14.6			
<b>CG1.5-30R1</b>	30	30	1	3°26'	R	H1	10	30	45.08	48	49.5	12	22	35	6.04	5.08	4.03	3.40	3.02	2.73	0.08~0.26	0.18	
<b>CG1.5-40R1</b>	40	40					12	30	60.11	63	64.5	12	22	42.5	10.3	8.71	7.01	5.98	5.31	4.83			
<b>CG1.5-50R1</b>	50	50					12	40	75.13	78	79.5	14	24	50	18.2	15.4	12.5	10.7	9.59	8.74			
<b>CG1.5-60R1</b>	60	60					12	40	90.16	93	94.5	14	24	57.5	25.5	21.6	17.6	15.1	13.7	12.4			

NOTE 1: Allowable torque based on worm speed (rpm)

Bronze Worm Wheels & Gray Iron Worm Wheels

J Series



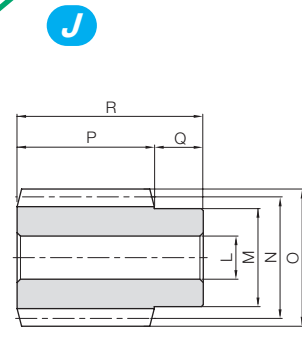
To order J Series products, please specify: **Catalog No. + J + BORE.**

Bore H7	* The product shapes of J Series items are identified by background color.																																									
	8	10	12	14	15	16	17	18	19	20	22	25	28	30																												
Keyway Js9	8			10			12			14			15			16			17			18			19			20			22			25			28			30		
Screw size	—				4x1.8				5x2.3				6x2.8				8x3.3																									
Catalog Number	M5				M4				M5				M6																													
<b>BG1.5-20R1 J BORE</b>	H1T	H1K																																								
<b>BG1.5-20R2 J BORE</b>	H1T	H1K																																								
<b>BG1.5-30R1 J BORE</b>		H1K	H1K	H1K	H1K	H1K	H1K																																			
<b>BG1.5-30R2 J BORE</b>		H1K	H1K	H1K	H1K	H1K	H1K																																			
<b>BG1.5-40R1 J BORE</b>			H1K	H1K	H1K	H1K	H1K																																			
<b>BG1.5-50R1 J BORE</b>				H1K	H1K	H1K	H1K	H1K	H1K	H1K	H1K	H1K	H1K	H1K	H1K	H1K	H1K	H1K	H1K	H1K	H1K	H1K	H1K	H1K	H1K	H1K	H1K	H1K	H1K	H1K	H1K	H1K	H1K	H1K								
<b>CG1.5-30R1 J BORE</b>		H1K	H1K	H1K	H1K	H1K	H1K																																			
<b>CG1.5-40R1 J BORE</b>			H1K	H1K	H1K	H1K	H1K																																			
<b>CG1.5-50R1 J BORE</b>				H1K	H1K	H1K	H1K	H1K	H1K	H1K	H1K	H1K	H1K	H1K	H1K	H1K	H1K	H1K	H1K	H1K	H1K	H1K	H1K	H1K	H1K	H1K	H1K	H1K	H1K	H1K	H1K	H1K	H1K	H1K								
<b>CG1.5-60R1 J BORE</b>					H1K	H1K	H1K	H1K	H1K	H1K	H1K	H1K	H1K	H1K	H1K	H1K	H1K	H1K	H1K	H1K	H1K	H1K	H1K	H1K	H1K	H1K	H1K	H1K	H1K	H1K	H1K	H1K	H1K	H1K								



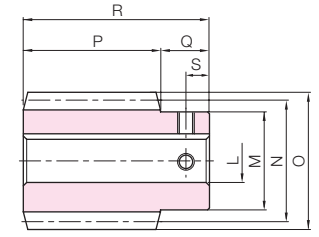
Specifications	
Precision grade	KHK W 001 grade 4*
Reference section of gear	Normal plane
Gear teeth	Standard full depth
Normal pressure angle	14°30'
Material	S45C
Heat treatment	—
Tooth hardness	(less than 194HB)
Surface treatment	Black oxide coating

\* The precision grade of J Series products is equivalent to the value shown in the table.



W1

J Series

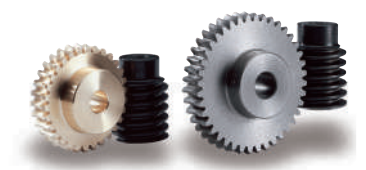


W1K

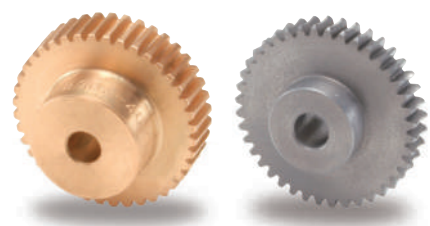


Catalog Number ● : J Series (Available-on-request)	Normal module	Number of Starts	Nominal lead angle	Direction of helix	Shape	Bore		Hub dia. M	Pitch dia. N	Outside dia. O	Face width P	Hub width (right) Q	Hub width (left) Q'
						LH7	LH7						
SW2-R1 ● SW2-R1J12 ● SW2-R1J14	m2	1	3°42'	R	W1	12	25	31	35	32	14	—	
W1K					12								
W1K					14								
W1					12								
SW2-R2 ● SW2-R2J12 ● SW2-R2J14		2	7°25'	R	W1	12							
W1K					12								
W1K					14								
W1					12								
SW2-L1 ● SW2-L1J12 ● SW2-L1J14	1	3°42'	L	W1	12								
W1K				12									
W1K				14									
W1				12									
SW2-L2 ● SW2-L2J12 ● SW2-L2J14	2	7°25'	L	W1	12								
W1K				12									
W1K				14									
W1				12									

Total length R	Keyway Width × Depth	Socket head screw		Weight (kg)	Catalog Number ● : J Series (Available-on-request)													
		Size	S		SW2-R1 ● SW2-R1J12 ● SW2-R1J14	SW2-R2 ● SW2-R2J12 ● SW2-R2J14												
46	— 4 x 1.8 5 x 2.3	— M4 M4	— 7 7	0.20 0.20 0.18	● SW2-R1 ● SW2-R1J12 ● SW2-R1J14	● SW2-R2 ● SW2-R2J12 ● SW2-R2J14												
							— 4 x 1.8 5 x 2.3	— M4 M4	— 7 7	0.20 0.20 0.18	● SW2-L1 ● SW2-L1J12 ● SW2-L1J14	● SW2-L2 ● SW2-L2J12 ● SW2-L2J14						
													— 4 x 1.8 5 x 2.3	— M4 M4	— 7 7	0.20 0.20 0.18	● SW2-L1 ● SW2-L1J12 ● SW2-L1J14	● SW2-L2 ● SW2-L2J12 ● SW2-L2J14



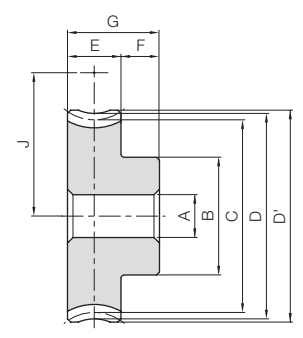
BG/CG Module 2  
Worm Wheels



Specifications	
Catalog Number	BG CG
Precision grade	KHK W 002 grade 4*
Reference section of gear	Normal plane
Gear teeth	Standard full depth
Normal pressure angle	14°30'
Material	CAC502 (old JIS PBC2) FC200**
Heat treatment	—
Tooth hardness	—

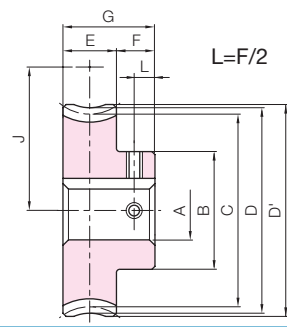
\* The precision grade of J Series products is equivalent to the value shown in the table.  
\*\* FC200's tensile strength (200N/mm<sup>2</sup>) is derived from test specimens and differs according to the product shape.

A <sub>H7</sub>	Bore
B	Hub dia.
C	Pitch dia.
D	Throat dia.
D'	Outside dia.
E	Face width
F	Hub width
G	Total length
(H)	Web thickness
(I)	Web O.D.
J	Mounting distance



H1

J Series



H1K

Bronze Worm Wheels & Gray Iron Worm Wheels



To order J Series products, please specify: Catalog No. + J + BORE.

Catalog Number	Production ratio	No. of teeth	No. of starts of mating worm	Lead angle helix direction	Shape	A <sub>H7</sub>	B	C	D	D'	E	F	G	(H)	(I)	J	Allowable torque (N·m) NOTE 1						Backlash (mm)	Weight (kg)
																	30 rpm	100 rpm	300 rpm	600 rpm	900 rpm	1200 rpm		
BG2-20R1	20	10	1	3°42'	R	12	33	40.08	44	46	22	13	35	—	—	35.5	12.3	10.2	8.00	6.59	5.78	5.25	0.10~0.28	0.33
BG2-20R2	10	2	7°25'	H1	12	33	40.34	44	46	22	13	35	—	—	35.5	12.3	10.0	7.51	6.15	5.32	4.80			
BG2-20L1	20	1	3°42'																			L	12	33
BG2-20L2	10	2	7°25'	H1	12	33	40.34	44	46	22	13	35	—	—	35.5	12.3	10.0	7.51	6.15	5.32	4.80			
CG2-20R1	20	20	1																			3°42'	H1	12
CG2-20R2	10	20	2	7°25'	33	40.34	44	46	35.5	7.40	6.00	4.51	3.69	3.19	2.88									
CG2-30R1	30	30	1	3°42'	H1	12	40	60.13	64	66	22	13	35	—	—	45.5	15.6	13.1	10.4	8.74	7.70	6.96	0.57	
CG2-30R2	15	30	2	7°25'			40	60.51	64	66														45.5
CG2-40R1	40	40	1	3°42'	H1	12	45	80.17	84	86	22	13	35	—	—	55.5	26.7	22.5	18.1	15.4	13.55	12.3	0.96	
CG2-50R1	50	50	1	3°42'			48	100.21	104	106														65.5
CG2-50R2	25	50	2	7°25'	H1	12	48	100.84	104	106	22	13	35	(7)	(88)	65.5	40.7	34.0	26.9	22.4	19.6	17.8	1.44	
CG2-60R1	60	60	1	3°42'			60	120.25	124	126														75.5
CG2-20L1	20	20	1	3°42'	H1	12	33	40.08	44	46	22	13	35	—	—	35.5	7.38	6.15	4.80	3.95	3.47	3.15	0.27	
CG2-20L2	10	20	2	7°25'			33	40.34	44	46														35.5
CG2-30L1	30	30	1	3°42'	H1	12	40	60.13	64	66	22	13	35	—	—	45.5	15.6	13.1	10.4	8.74	7.70	6.96	0.57	
CG2-40L1	40	40	1	3°42'			45	80.17	84	86														55.5
CG2-50L1	50	50	1	3°42'	H1	12	48	100.21	104	106	22	13	35	—	—	65.5	40.3	34.1	27.6	23.6	21.0	19.1	1.44	
CG2-60L1	60	60	1	3°42'			60	120.25	124	126														75.5

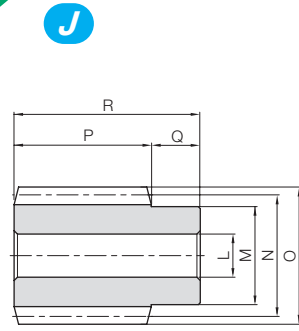
Bore H7	* The product shapes of J Series items are identified by background color.																			
	12	14	15	16	17	18	19	20	22	25	28	30	32	35						
Keyway JS9	4x1.8			5x2.3				6x2.8				8x3.3		10x3.3						
Screw size	M4				M5				M6		M8									
Catalog Number	M4												M5				M6		M8	
BG2-20R1 J BORE	H1K	H1K	H1K	H1K	H1K															
BG2-20R2 J BORE	H1K	H1K	H1K	H1K	H1K															
BG2-20L1 J BORE	H1K	H1K	H1K	H1K	H1K															
BG2-20L2 J BORE	H1K	H1K	H1K	H1K	H1K															
CG2-20R1 J BORE	H1K	H1K	H1K	H1K	H1K															
CG2-20R2 J BORE	H1K	H1K	H1K	H1K	H1K															
CG2-30R1 J BORE	H1K	H1K	H1K	H1K	H1K	H1K	H1K	H1K	H1K											
CG2-30R2 J BORE	H1K	H1K	H1K	H1K	H1K	H1K	H1K	H1K	H1K											
CG2-40R1 J BORE	H1K	H1K	H1K	H1K	H1K	H1K	H1K	H1K	H1K	H1K										
CG2-40R2 J BORE	H1K	H1K	H1K	H1K	H1K	H1K	H1K	H1K	H1K	H1K										
CG2-50R1 J BORE	H1K	H1K	H1K	H1K	H1K	H1K	H1K	H1K	H1K	H1K	H1K									
CG2-50R2 J BORE	H1K	H1K	H1K	H1K	H1K	H1K	H1K	H1K	H1K	H1K	H1K									
CG2-60R1 J BORE	H1K	H1K	H1K	H1K	H1K	H1K	H1K	H1K	H1K	H1K	H1K	H1K								
CG2-20L1 J BORE	H1K	H1K	H1K	H1K	H1K															
CG2-20L2 J BORE	H1K	H1K	H1K	H1K	H1K															
CG2-30L1 J BORE	H1K	H1K	H1K	H1K	H1K	H1K	H1K	H1K	H1K											
CG2-30L2 J BORE	H1K	H1K	H1K	H1K	H1K	H1K	H1K	H1K	H1K											
CG2-40L1 J BORE	H1K	H1K	H1K	H1K	H1K	H1K	H1K	H1K	H1K	H1K										
CG2-40L2 J BORE	H1K	H1K	H1K	H1K	H1K	H1K	H1K	H1K	H1K	H1K	H1K									
CG2-50L1 J BORE	H1K	H1K	H1K	H1K	H1K	H1K	H1K	H1K	H1K	H1K	H1K	H1K								
CG2-50L2 J BORE	H1K	H1K	H1K	H1K	H1K	H1K	H1K	H1K	H1K	H1K	H1K	H1K	H1K							
CG2-60L1 J BORE	H1K	H1K	H1K	H1K	H1K	H1K	H1K	H1K	H1K	H1K	H1K	H1K	H1K	H1K						
CG2-60L2 J BORE	H1K	H1K	H1K	H1K	H1K	H1K	H1K	H1K	H1K	H1K	H1K	H1K	H1K	H1K	H1K					





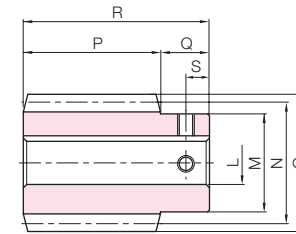
Specifications	
Precision grade	KHK W 001 grade 4*
Reference section of gear	Normal plane
Gear teeth	Standard full depth
Normal pressure angle	20°
Material	S45C
Heat treatment	—
Tooth hardness	(less than 194HB)
Surface treatment	Black oxide coating

\* The precision grade of J Series products is equivalent to the value shown in the table.



W1

J Series

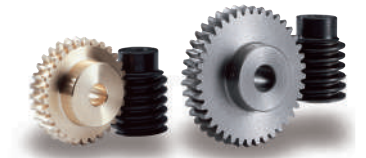


W1K

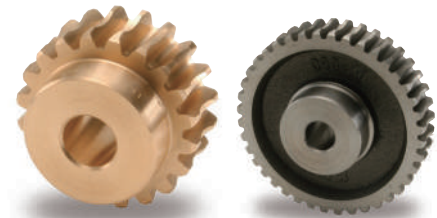


Catalog Number ● : J Series (Available-on-request)	Normal module	Number of Starts	Nominal lead angle	Direction of helix	Shape	Bore		Hub dia.	Pitch dia.	Outside dia.	Face width	Hub width (right)		Hub width (left)	
						LH7	M					N	O	P	Q
SW2.5-R1 ● SW2.5-R1J15 ● SW2.5-R1J16 ● SW2.5-R1J17	m2.5	1	3°52'	R	W1	15	30	37	42	45	18	—	—	—	—
W1K					15										
W1K					16										
W1K					17										
SW2.5-R2 ● SW2.5-R2J15 ● SW2.5-R2J16 ● SW2.5-R2J17		2	7°46'	R	W1	15									
W1K					15										
W1K					16										
W1K					17										
SW2.5-L1 ● SW2.5-L1J15 ● SW2.5-L1J16 ● SW2.5-L1J17	1	3°52'	L	W1	15										
W1K				15											
W1K				16											
W1K				17											
SW2.5-L2 ● SW2.5-L2J15 ● SW2.5-L2J16 ● SW2.5-L2J17	2	7°46'	L	W1	15										
W1K				15											
W1K				16											
W1K				17											

Total length R	Keyway Width × Depth	Socket head screw Size	S	Weight (kg)	Catalog Number ● : J Series (Available-on-request)		
					Keyway	Socket head screw	
63	—	—	—	0.39	SW2.5-R1	SW2.5-R1J15	
					SW2.5-R1J16	SW2.5-R1J17	
					SW2.5-R2	SW2.5-R2J15	
					SW2.5-R2J16	SW2.5-R2J17	
	5 × 2.3	M4	9	9	0.39	SW2.5-L1	SW2.5-L1J15
						SW2.5-L1J16	SW2.5-L1J17
						SW2.5-L2	SW2.5-L2J15
						SW2.5-L2J16	SW2.5-L2J17
	5 × 2.3	M4	9	9	0.36	SW2.5-L1	SW2.5-L1J15
						SW2.5-L1J16	SW2.5-L1J17
						SW2.5-L2	SW2.5-L2J15
						SW2.5-L2J16	SW2.5-L2J17



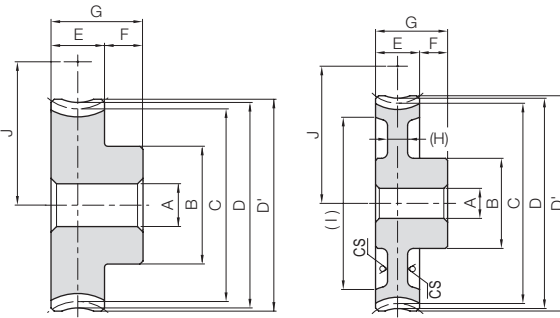
BG/CG Module 2.5  
Worm Wheels



Specifications	
Catalog Number	BG CG
Precision grade	KHK W 002 grade 4*
Reference section of gear	Normal plane
Gear teeth	Standard full depth
Normal pressure angle	20°
Material	CAC502 (old JIS PBC2) FC200*
Heat treatment	—
Tooth hardness	—

\* The precision grade of J Series products is equivalent to the value shown in the table.  
\*\* FC200's tensile strength (200N/mm<sup>2</sup>) is derived from test specimens and differs according to the product shape.

AH7	Bore
B	Hub dia.
C	Pitch dia.
D	Throat dia.
D'	Outside dia.
E	Face width
F	Hub width
G	Total length
(H)	Web thickness
(I)	Web O.D.
J	Mounting distance



H1

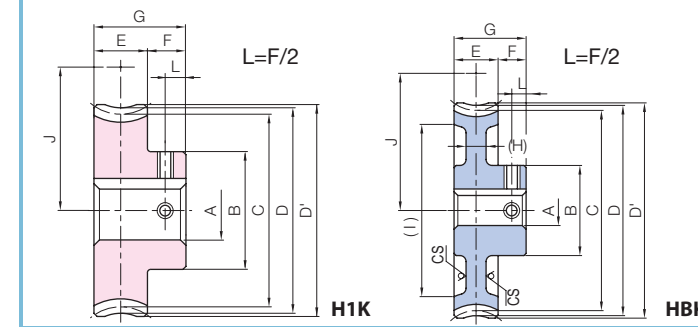
HB

\*\* CS has a forged finish surface.

NOTE 1: Allowable torque based on worm speed (rpm)

Catalog Number	Reduction ratio	No. of teeth	No. of starts of mating worm	Lead angle helix direction	Shape	AH7	B	C	D	D'	E	F	G	(H)	(I)	J	Allowable torque (N·m) NOTE 1						Backlash (mm)	Weight (kg)	
																	30 rpm	100 rpm	300 rpm	600 rpm	900 rpm	1200 rpm			
																	30 rpm	100 rpm	300 rpm	600 rpm	900 rpm	1200 rpm			
BG2.5-20R1	20	10	1	3°52'	R	12	35	50.11	55	57.5	22	14	36	—	—	43.5	21.5	17.7	13.8	11.4	9.94	9.07	0.13~0.31	0.49	
BG2.5-20R2	20	10	2	7°46'	H1	12	35	50.46	55	57.5	22	14	36	—	—	43.5	21.5	17.3	13.0	10.6	9.14	8.27	0.13~0.31	0.49	
BG2.5-20L1	20	10	1	3°52'	L	12	35	50.11	55	57.5	22	14	36	—	—	43.5	21.5	17.7	13.8	11.4	9.94	9.07	0.13~0.31	0.49	
BG2.5-20L2	20	10	2	7°46'	L	12	35	50.46	55	57.5	22	14	36	—	—	43.5	21.5	17.3	13.0	10.6	9.14	8.27	0.13~0.31	0.49	
CG2.5-20R1	20	20	1	3°52'	R	12	35	50.11	55	57.5	22	14	36	—	—	43.5	12.9	10.6	8.30	6.83	5.97	5.44	0.13~0.31	0.40	
CG2.5-20R2	20	20	2	7°46'	H1	12	35	50.46	55	57.5	22	14	36	—	—	43.5	12.9	10.4	7.78	6.36	5.49	4.96	0.13~0.31	0.40	
CG2.5-30R1	30	30	1	3°52'	R	12	40	75.17	80	82.5	22	14	36	—	—	43.5	56	27.3	22.8	18.0	15.1	13.2	12.0	0.13~0.31	0.82
CG2.5-30R2	30	30	2	7°46'	H1	12	40	75.68	80	82.5	22	14	36	—	—	43.5	56	27.5	22.5	17.2	14.1	12.3	11.1	0.13~0.31	0.82
CG2.5-40R1	40	40	1	3°52'	R	15	45	100.23	105	107.5	22	14	36	—	—	68.5	46.7	39.0	31.3	26.5	23.3	21.2	0.13~0.31	1.39	
CG2.5-50R1	50	50	1	3°52'	HB	15	50	125.29	130	132.5	22	14	36	(9)	(110)	81	70.6	59.0	47.8	40.7	36.1	33.0	0.13~0.31	1.54	
CG2.5-60R1	60	60	1	3°52'	HB	15	55	150.34	155	157.5	22	14	36	(9)	(136)	93.5	98.8	82.9	67.3	57.6	51.5	47.0	0.13~0.31	2.02	
CG2.5-20L1	20	20	1	3°52'	L	12	35	50.11	55	57.5	22	14	36	—	—	43.5	12.9	10.6	8.30	6.83	5.97	5.44	0.13~0.31	0.40	
CG2.5-20L2	20	20	2	7°46'	L	12	35	50.46	55	57.5	22	14	36	—	—	43.5	12.9	10.4	7.78	6.36	5.49	4.96	0.13~0.31	0.40	
CG2.5-40L1	40	40	1	3°52'	L	15	45	100.23	105	107.5	22	14	36	—	—	68.5	46.7	39.0	31.3	26.5	23.3	21.2	0.13~0.31	1.39	

J Series



H1K

HBK



Bronze Worm Wheels & Gray Iron Worm Wheels

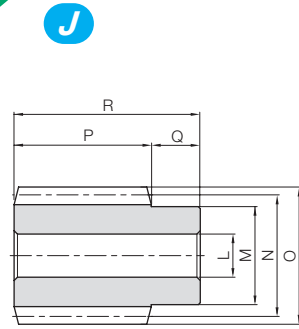
To order J Series products, please specify: **Catalog No. + J + BORE.**

Bore H7	* The product shapes of J Series items are identified by background color.																
	12	14	15	16	17	18	19	20	22	25	28	30	32	35			
Keyway Js9	4x1.8			5x2.3						6x2.8			8x3.3			10x3.3	
Screw size	M4			M5						M6			M8				
Catalog Number	M4																
BG2.5-20R1 J BORE	H1K	H1K	H1K	H1K	H1K	H1K	H1K	H1K	H1K								
BG2.5-20R2 J BORE	H1K	H1K	H1K	H1K	H1K	H1K	H1K	H1K	H1K								
BG2.5-20L1 J BORE	H1K	H1K	H1K	H1K	H1K	H1K	H1K	H1K	H1K								
BG2.5-20L2 J BORE	H1K	H1K	H1K	H1K	H1K	H1K	H1K	H1K	H1K								
CG2.5-20R1 J BORE	H1K	H1K	H1K	H1K	H1K	H1K	H1K	H1K	H1K								
CG2.5-20R2 J BORE	H1K	H1K	H1K	H1K	H1K	H1K	H1K	H1K	H1K								
CG2.5-30R1 J BORE	H1K	H1K	H1K	H1K	H1K	H1K	H1K	H1K	H1K	H1K	H1K						
CG2.5-30R2 J BORE	H1K	H1K	H1K	H1K	H1K	H1K	H1K	H1K	H1K	H1K	H1K						
CG2.5-40R1 J BORE			H1K	H1K	H1K	H1K	H1K	H1K	H1K	H1K	H1K	H1K					
CG2.5-50R1 J BORE			HBK	HBK	HBK	HBK	HBK	HBK	HBK	HBK	HBK	HBK	HBK	HBK			
CG2.5-60R1 J BORE			HBK	HBK	HBK	HBK	HBK	HBK	HBK	HBK	HBK	HBK	HBK	HBK			
CG2.5-20L1 J BORE	H1K	H1K	H1K	H1K	H1K	H1K	H1K	H1K	H1K								
CG2.5-20L2 J BORE	H1K	H1K	H1K	H1K	H1K	H1K	H1K	H1K	H1K								
CG2.5-40L1 J BORE			H1K	H1K	H1K	H1K	H1K	H1K	H1K	H1K	H1K						





Specifications	
Precision grade	KHK W 001 grade 4*
Reference section of gear	Normal plane
Gear teeth	Standard full depth
Normal pressure angle	14°30'
Material	S45C
Heat treatment	—
Tooth hardness	(less than 194HB)
Surface treatment	Black oxide coating

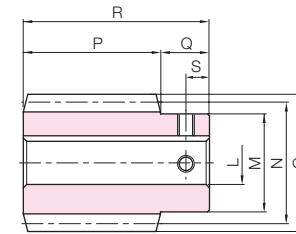


W1

\* The precision grade of J Series products is equivalent to the value shown in the table.

Catalog Number ● : J Series (Available-on-request)	Normal module	Number of Starts	Nominal lead angle	Direction of helix	Shape	Bore		Hub dia.	Pitch dia.	Outside dia.	Face width	Hub width (right)	Hub width (left)
						L <sub>H7</sub>	M						
SW3-R1 ● SW3-R1J17 ● SW3-R1J18 ● SW3-R1J19 ● SW3-R1J20	m3	1	3°55'	R	W1	16	35	44	50	50	20	—	
W1K					17								
W1K					18								
W1K					19								
W1K		20											
W1		16											
W1K		17											
W1K		18											
W1K	19												
W1K	20												
SW3-L1 ● SW3-L1J17 ● SW3-L1J18 ● SW3-L1J19 ● SW3-L1J20	1	3°55'	L	W1	16								
W1K				17									
W1K				18									
W1K				19									
W1K	20												
SW3-L2 ● SW3-L2J17 ● SW3-L2J18 ● SW3-L2J19 ● SW3-L2J20	2	7°50'	L	W1	16								
W1K				17									
W1K				18									
W1K				19									
W1K	20												

J Series



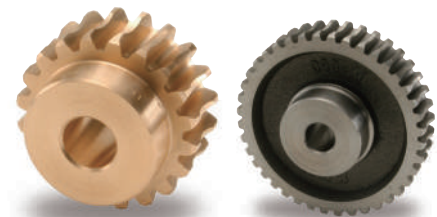
W1K



Total length R	Keyway Width × Depth	Socket head screw		Weight (kg)	Catalog Number ● : J Series (Available-on-request)
		Size	S		
70	5 × 2.3	M4	10	0.64	SW3-R1
				0.62	● SW3-R1J17
				0.60	● SW3-R1J18
				0.58	● SW3-R1J19
	6 × 2.8	M5	10	0.56	● SW3-R1J20
				0.64	SW3-R2
				0.62	● SW3-R2J17
				0.60	● SW3-R2J18
	6 × 2.8	M5	10	0.58	● SW3-R2J19
				0.56	● SW3-R2J20
				0.64	SW3-L1
				0.62	● SW3-L1J17
6 × 2.8	M5	10	0.60	● SW3-L1J18	
			0.58	● SW3-L1J19	
			0.56	● SW3-L1J20	
			0.64	SW3-L2	
6 × 2.8	M5	10	0.62	● SW3-L2J17	
			0.60	● SW3-L2J18	
			0.58	● SW3-L2J19	
			0.56	● SW3-L2J20	



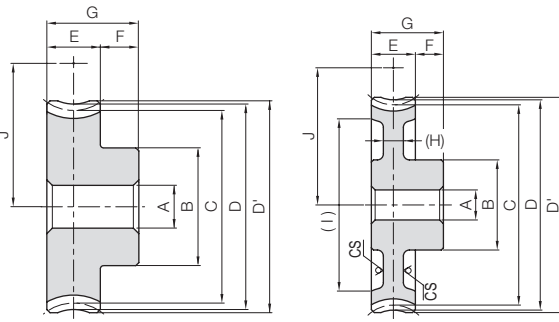
BG/CG Module 3  
Worm Wheels



Specifications	
Catalog Number	BG CG
Precision grade	KHK W 002 grade 4*
Reference section of gear	Normal plane
Gear teeth	Standard full depth
Normal pressure angle	14°30'
Material	CAC502 (old JIS PBC2) FC200**
Heat treatment	—
Tooth hardness	—

\* The precision grade of J Series products is equivalent to the value shown in the table.  
\*\* FC200's tensile strength (200N/mm<sup>2</sup>) is derived from test specimens and differs according to the product shape.

	A <sub>H7</sub>	Bore
B		Hub dia.
C		Pitch dia.
D		Throat dia.
D'		Outside dia.
E		Face width
F		Hub width
G		Total length
(H)		Web thickness
(I)		Web O.D.
J		Mounting distance

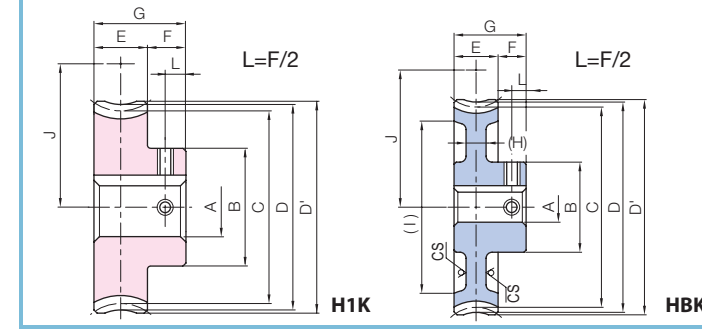


H1

HB

\*\* CS has a forged finish surface.

J Series



H1K

HBK



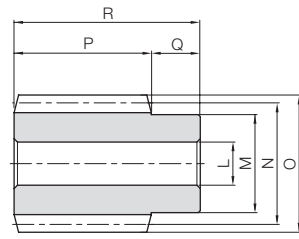
To order J Series products, please specify: **Catalog No. + J + BORE.**

Catalog Number	Reduction ratio	No. of teeth	No. of starts of mating worm	Lead angle helix direction	Shape	A <sub>H7</sub>	B	C	D	D'	E	F	G	(H)	(I)	J	Allowable torque (N·m) NOTE 1						Backlash (mm)	Weight (kg)
																	NOTE 1							
																	30 rpm	100 rpm	300 rpm	600 rpm	900 rpm	1200 rpm		
BG3-20R1	20	10	1	3°55'	R	20	50	60.14	66	69	28	15	43	—	—	52	36.8	30.1	23.5	19.1	16.7	15.2	0.15~0.33	0.89
BG3-20R2	20	10	2	7°50'	R	20	50	60.57	66	69	28	15	43	—	—	52	37.0	29.5	22.1	17.9	15.4	14.0		
BG3-20L1	20	10	1	3°55'	L	20	50	60.14	66	69	28	15	43	—	—	52	36.8	30.1	23.5	19.1	16.7	15.2	0.15~0.33	0.89
BG3-20L2	20	10	2	7°50'	L	20	50	60.57	66	69	28	15	43	—	—	52	37.0	29.5	22.1	17.9	15.4	14.0		
CG3-20R1	20	20	1	3°55'	R	20	50	60.14	66	69	28	15	43	—	—	52	22.1	18.1	14.1	11.5	10.0	0.15~0.33	0.73	
CG3-20R2	20	20	2	7°50'	R	20	50	60.57	66	69	28	15	43	—	—	52	22.2	17.7	13.3	10.7	9.24			
CG3-30R1	30	30	1	3°55'	R	20	55	90.21	96	99	30	45	(9)	(107)	(138)	82	46.6	38.7	30.6	25.4	22.2	0.15~0.33	1.50	
CG3-30R2	30	30	2	7°50'	R	20	55	90.85	96	99	30	45	(9)	(138)	(166)	67	47.2	38.5	29.3	23.7	20.8			
CG3-40R1	40	40	1	3°55'	R	20	60	120.28	126	129	30	45	(9)	(107)	(138)	82	79.8	66.3	53.2	44.6	39.1	0.15~0.33	1.93	
CG3-50R1	50	50	1	3°55'	R	20	63	150.35	156	159	30	45	(9)	(138)	(166)	97	121	100	81.1	68.4	60.5			
CG3-60R1	60	60	1	3°55'	R	20	70	180.42	186	189	30	45	(9)	(138)	(166)	112	169	141	114	96.7	86.3	0.15~0.33	3.58	
CG3-20L1	20	20	1	3°55'	L	20	50	60.14	66	69	28	43	—	—	52	22.1	18.1	14.1	11.5	10.0				
CG3-20L2	20	20	2	7°50'	L	20	50	60.57	66	69	28	43	—	—	52	22.2	17.7	13.3	10.7	9.24				
CG3-30L1	30	30	1	3°55'	L	20	55	90.21	96	99	30	45	—	—	67	46.6	38.7	30.6	25.4	22.2				
CG3-50L1	50	50	1	3°55'	L	20	63	150.35	156	159	30	45	(9)	(138)	(166)	97	121	100	81.1	68.4	60.5	0.15~0.33	2.67	
CG3-60L1	60	60	1	3°55'	L	20	70	180.42	186	189	30	45	(9)	(138)	(166)	112	169	141	114	96.7	86.3			

Bore H7	* The product shapes of J Series items are identified by background color.							
Keyway JS9	20	22	25	28	30	32	35	40
Screw size	6×2.8			8×3.3			10×3.3	
Catalog Number	M5			M6			M8	
BG3-20R1 J BORE	H1K	H1K	H1K	H1K	H1K			
BG3-20R2 J BORE	H1K	H1K	H1K	H1K	H1K			
BG3-20L1 J BORE	H1K	H1K	H1K	H1K	H1K			
BG3-20L2 J BORE	H1K	H1K	H1K	H1K	H1K			
CG3-20R1 J BORE	H1K	H1K	H1K	H1K	H1K			
CG3-20R2 J BORE	H1K	H1K	H1K	H1K	H1K			
CG3-30R1 J BORE	H1K	H1K	H1K	H1K	H1K	H1K		
CG3-30R2 J BORE	H1K	H1K	H1K	H1K	H1K	H1K		
CG3-40R1 J BORE	HBK	HBK	HBK	HBK	HBK	HBK		
CG3-50R1 J BORE	HBK	HBK	HBK	HBK	HBK	HBK	HBK	
CG3-60R1 J BORE	HBK	HBK	HBK	HBK	HBK	HBK	HBK	HBK
CG3-20L1 J BORE	H1K	H1K	H1K	H1K	H1K			
CG3-20L2 J BORE	H1K	H1K	H1K	H1K	H1K			
CG3-30L1 J BORE	H1K	H1K	H1K	H1K	H1K	H1K		
CG3-50L1 J BORE	HBK	HBK	HBK	HBK	HBK	HBK	HBK	
CG3-60L1 J BORE	HBK	HBK	HBK	HBK	HBK	HBK	HBK	HBK



Specifications	
Precision grade	KHK W 001 grade 4
Reference section of gear	Normal plane
Gear teeth	Standard full depth
Normal pressure angle	14°30'
Material	S45C
Heat treatment	—
Tooth hardness	(less than 194HB)
Surface treatment	Black oxide coating



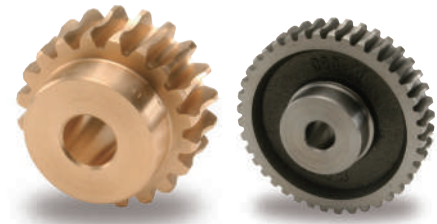
W1

Catalog Number	Normal module	Number of Starts	Nominal lead angle	Direction of helix	Shape	Bore	Hub dia.	Pitch dia.	Outside dia.	Face width	Hub width (right)	Hub width (left)
						L <sub>H7</sub>	M	N	O	P	Q	Q'
SW4-R1 SW4-R2	<b>m4</b>	1 2	3°42' 7°25'	R	W1	22	50	62	70	70	25	—

Total length	Socket head screw		Weight (kg)	Catalog Number
R	Size	S		
95	—	—	1.76	SW4-R1 SW4-R2

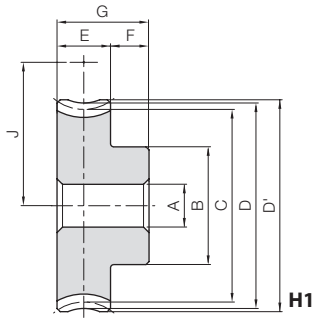
BG/CG Module 4  
Worm Wheels

Bronze Worm Wheels & Gray Iron Worm Wheels



Specifications	
Catalog Number	BG CG
Precision grade	KHK W 002 grade 4 KHK W 002 grade 4
Reference section of gear	Normal plane Normal plane
Gear teeth	Standard full depth Standard full depth
Normal pressure angle	14°30' 14°30'
Material	CAC502 (old JIS PBC2) FC200*
Heat Treatment	— —
Tooth hardness	— —

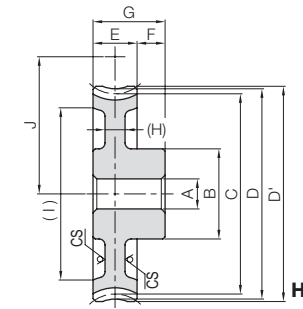
\* FC200's tensile strength (200N/mm<sup>2</sup>) is derived from test specimens and differs according to the product shape.



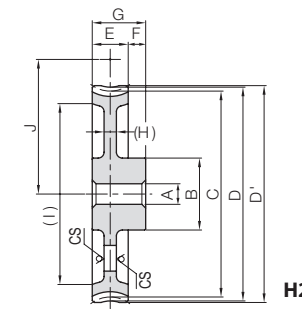
H1

Catalog Number	Reduction ratio	Normal module	No. of teeth	No. of starts of mating worm	Lead angle	Direction of helix	Shape	Bore	Hub dia.	Pitch dia.	Throat dia.	Outside dia.	Face width
								A <sub>H7</sub>	B	C	D	D'	E
BG4-20R1 BG4-20R2	20 10	<b>m4</b>	20	1 2	3°42' 7°25'	R	H1	20	60	80.17 80.67	88	90	35

Catalog Number	Reduction ratio	Normal module	No. of teeth	No. of starts of mating worm	Lead angle	Direction of helix	Shape	Bore	Hub dia.	Pitch dia.	Throat dia.	Outside dia.	Face width
								A <sub>H7</sub>	B	C	D	D'	E
CG4-20R1 CG4-20R2 CG4-30R1 CG4-30R2 CG4-40R1	20 10 30 15 40	<b>m4</b>	20 20 30 30 40	1 2 1 2 1	3°42' 7°25' 3°42' 7°25' 3°42'	R	H1 H1 H1 H1 HB	20	60 60 60 60 70	80.17 80.67 120.25 121.01 160.33	88 88 128 128 168	90 90 130 130 171	35
CG4-50R1 CG4-50R2 CG4-60R1	50 25 60		50 50 60	1 2 1	3°42' 7°25' 3°42'		H2		70 70 80	200.42 201.69 240.5	208 208 248	211 211 251	



HB



H2

\* CS has a forged finish surface. NOTE 1: Allowable torque based on worm speed (rpm)

Hub width	Total length	Mounting distance	Allowable torque (N·m) NOTE 1						Backlash (mm)	Weight (kg)	Catalog Number
			30 <sub>rpm</sub>	100 <sub>rpm</sub>	300 <sub>rpm</sub>	600 <sub>rpm</sub>	900 <sub>rpm</sub>	1200 <sub>rpm</sub>			
F	G	J	30 <sub>rpm</sub>	100 <sub>rpm</sub>	300 <sub>rpm</sub>	600 <sub>rpm</sub>	900 <sub>rpm</sub>	1200 <sub>rpm</sub>			
17	52	71	75.9 75.9	61.7 60.0	47.9 44.8	38.4 35.7	33.7 30.9	30.1 27.5	0.17~0.37	1.91	BG4-20R1 BG4-20R2

NOTE 1: Allowable torque based on worm speed (rpm)

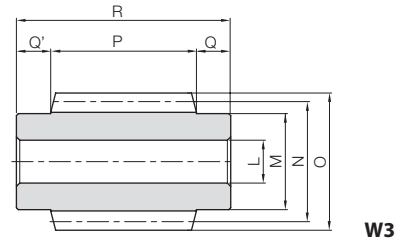
Hub width	Total length	Web thickness	Web O.D.	Mounting distance	Allowable torque (N·m) NOTE 1				Backlash (mm)	Weight (kg)	Catalog Number
					30 <sub>rpm</sub>	100 <sub>rpm</sub>	300 <sub>rpm</sub>	600 <sub>rpm</sub>			
F	G	(H)	(I)	J	30 <sub>rpm</sub>	100 <sub>rpm</sub>	300 <sub>rpm</sub>	600 <sub>rpm</sub>			
17	52	— — — — (11)	— — — — (136)	71 71 91 91 111	45.6 45.5 96.3 96.8 165	37.0 36.0 79.1 78.3 136	28.7 26.9 62.3 59.4 108	23.0 21.4 50.9 47.3 89.4	0.17~0.37	1.56 1.56 3.17 3.17 4.02	CG4-20R1 CG4-20R2 CG4-30R1 CG4-30R2 CG4-40R1
		(12) (12) (12)	(176) (176) (218)	131 131 151	249 250 348	205 204 288	165 160 233	137 130 194		4.97 4.97 6.58	CG4-50R1 CG4-50R2 CG4-60R1







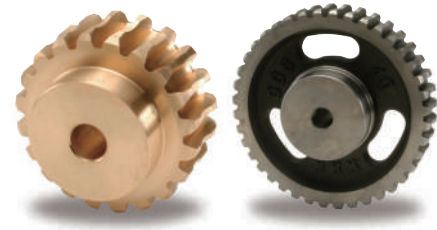
Specifications	
Precision grade	KHK W 001 grade 4
Reference section of gear	Normal plane
Gear teeth	Standard full depth
Normal pressure angle	14°30'
Material	S45C
Heat treatment	—
Tooth hardness	(less than 194HB)
Surface treatment	Black oxide coating



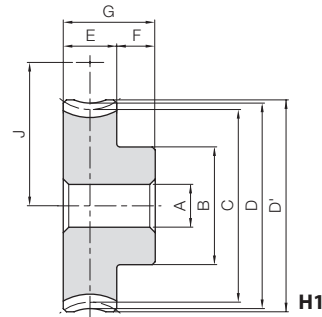
Catalog Number	Normal module	Number of Starts	Nominal lead angle	Direction of helix	Shape	Bore		Pitch dia.	Outside dia.	Face width	Hub width (right)		Hub width (left)	
						L <sub>H7</sub>	M				N	O	P	Q
<b>SW5-R1</b> <b>SW5-R2</b>	<b>m5</b>	1 2	4°06' 8°13'	R	W3	25	56	70	80	85	20	20		
<b>SW6-R1</b> <b>SW6-R2</b>	<b>m6</b>	1 2	4°18' 8°38'	R	W3	30	64	80	92	100	25	25		

Total length R	Socket head screw		Weight (kg)	Catalog Number
	Size	S		
125	—	—	2.86	<b>SW5-R1</b> <b>SW5-R2</b>
150	—	—	4.38	<b>SW6-R1</b> <b>SW6-R2</b>

BG/CG Module 5, 6  
**Worm Wheels**



Specifications	
Catalog Number	BG CG
Precision grade	KHK W 002 grade 4
Reference section of gear	Normal plane
Gear teeth	Standard full depth
Normal pressure angle	14°30'
Material	CAC502 (old JIS PBC2) FC200*
Heat Treatment	—
Tooth hardness	—

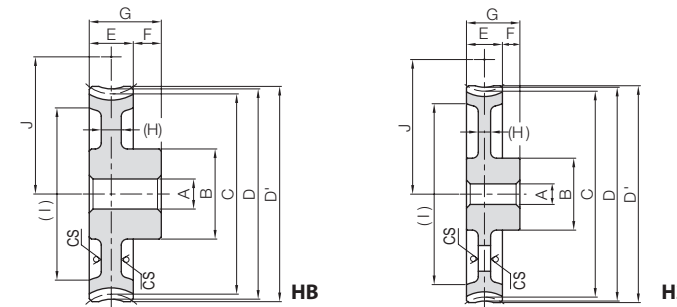


\* FC200's tensile strength (200N/mm<sup>2</sup>) is derived from test specimens and differs according to the product shape.

Catalog Number	Reduction ratio	Normal module	No. of teeth	No. of starts of mating worm	Lead angle	Direction of helix	Shape	Bore		Pitch dia.	Throat dia.	Outside dia.	Face width
								A <sub>H7</sub>	B				
<b>BG5-20R1</b> <b>BG5-20R2</b>	20 10	<b>m5</b>	20	1 2	4°06' 8°13'	R	H1	22	75	100.26 101.04	110	113	45
<b>BG6-20R1</b> <b>BG6-20R2</b>	20 10	<b>m6</b>	20	1 2	4°18' 8°38'	R	H1	25	100	120.34 121.38	132	136	52

Catalog Number	Reduction ratio	Normal module	No. of teeth	No. of starts of mating worm	Lead angle	Direction of helix	Shape	Bore		Pitch dia.	Throat dia.	Outside dia.	Face width
								A <sub>H7</sub>	B				
<b>CG5-20R1</b> <b>CG5-30R1</b> <b>CG5-30R2</b> <b>CG5-40R1</b>	20 30 15 40	<b>m5</b>	20 30 30 40	1 1 2 1	4°06' 4°06' 8°13' 4°06'	R	H1 HB H2	22	75	100.26 150.38 151.56 200.51	110 160 160 210	113 163 163 213	45
<b>CG5-50R1</b> <b>CG5-60R1</b>	50 60		50 60	1 1	4°06' 4°06'		H2		90 100	250.61 300.77	260 310	263 313	
<b>CG6-20R1</b> <b>CG6-30R1</b> <b>CG6-40R1</b>	20 30 40	<b>m6</b>	20 30 40	1 1 1	4°18' 4°18' 4°18'	R	H1 HB H2	25	100	120.34 180.51 240.68	132 192 252	136 196 256	52
<b>CG6-50R1</b> <b>CG6-60R1</b>	50 60		50 60	1 1	4°18' 4°18'		H2		100 120	300.85 361.02	312 372	316 376	

**Bronze Worm Wheels & Gray Iron Worm Wheels**



\* CS has a forged finish surface.

NOTE 1: Allowable torque based on worm speed (rpm)

Hub width F	Total length G	Mounting distance J	Allowable torque (N·m) <sup>NOTE 1</sup>						Backlash (mm)	Weight (kg)	Catalog Number
			30 <sub>rpm</sub>	100 <sub>rpm</sub>	300 <sub>rpm</sub>	600 <sub>rpm</sub>	900 <sub>rpm</sub>	1200 <sub>rpm</sub>			
20	65	85	146 146	117 115	91.2 85.8	73.0 68.4	63.7 58.8	56.9 52.2	0.20~0.40	3.89	<b>BG5-20R1</b> <b>BG5-20R2</b>
20	72	100	232 235	185 183	144 136	115 109	99.2 92.3	88.8 82.0	0.22~0.42	6.60	<b>BG6-20R1</b> <b>BG6-20R2</b>

NOTE 1: Allowable torque based on worm speed (rpm)

Hub width F	Total length G	Web thickness (H)	Web O.D. (I)	Mounting distance J	Allowable torque (N·m) <sup>NOTE 1</sup>				Backlash (mm)	Weight (kg)	Catalog Number
					30 <sub>rpm</sub>	100 <sub>rpm</sub>	300 <sub>rpm</sub>	600 <sub>rpm</sub>			
20	65	—	—	85	87.4	70.3	54.7	43.8	0.20~0.40	3.18 5.07 5.07 7.75	<b>CG5-20R1</b> <b>CG5-30R1</b> <b>CG5-30R2</b> <b>CG5-40R1</b>
		(13)	(127)	110	185	150	119	96.8			
		(13)	(127)	110	187	150	114	90.6			
		(16)	(172)	135	316	258	206	170			
20	72	(16)	(223)	160	477	390	315	261	0.22~0.42	10.1 12.3	<b>CG5-50R1</b> <b>CG5-60R1</b>
		(14)	(276)	185	668	548	443	369			
		—	—	100	139	111	86.2	—			
		(15)	(155)	130	294	237	187	—			
20	72	(15)	(213)	160	502	407	325	—	0.22~0.42	11.4	<b>CG6-20R1</b> <b>CG6-30R1</b> <b>CG6-40R1</b>
		(16)	(275)	190	760	615	496	—			
		(17)	(336)	220	1060	865	698	—			

