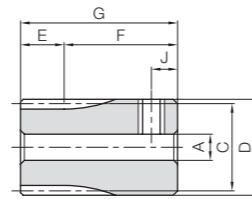


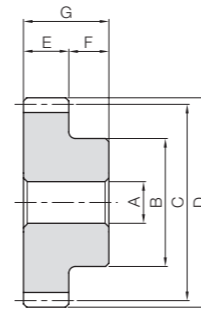


Specifications	
Precision grade	JIS grade N8 (JIS B1702-1: 1998)*
Gear teeth	Standard full depth
Pressure angle	20°
Material	Free cutting brass (C3604)
Heat Treatment	—
Tooth hardness	(80HV or more)

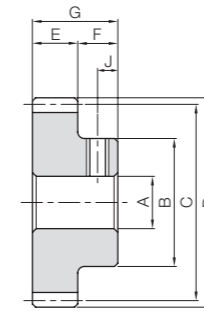
* The precision grade of products with a module of less than 0.8 is equivalent to the value shown in the table.



S3T



S1



S1T

Catalog Number	Module	No. of teeth	Shape	Bore				Hub dia.	Pitch dia.	Outside dia.	Face width	Hub width	Total length	Socket head screw				
				A _{H7}	B	C	D							E	F	G	Size	J
BSS0.5-15A	m0.5	15	S3T	3	8.5	7.5	8.5	3	11	14	M3	2.5	—	—				
BSS0.5-16A		9			8	9												
BSS0.5-20		S1	20	4	8.5	10	11	3	7	10	—	—	—	—				
BSS0.5-20A					S3T	3	11								10	11		
BSS0.5-22A		S1T	22	3	9	11	12	3	7	10	M3	3.5	—	—				
BSS0.5-24B					S1T	4	10								12	13		
BSS0.5-25		S1	25	4	11	12.5	13.5	3	7	10	—	—	—	—				
BSS0.5-30		S1	30	4	13	15	16	3	7	10	M3	3.5	—	—				
BSS0.5-30A					S1T										3	12	15	16
BSS0.5-30B					S1T										4	12	15	16
BSS0.5-30C					S1T										5	12	15	16
BSS0.5-38A		S1T	38	4	16	19	20	3	7	10	M3	3.5	—	—				
BSS0.5-40		S1	40	4	17	20	21	3	7	10	—	—	—	—				
BSS0.5-50A		S1T	50	4	22	25	26	3	7	10	M3	3.5	—	—				
BSS0.8-20		m0.8	20	S1	5	13.5	16	17.6	4	8	12	—	—	—	—			
BSS0.8-24B			16			19.2	20.8											
BSS0.8-25	17		20			21.6												
BSS0.8-30	S1T		30	4	20	24	25.6	4	8	12	—	—	—	—				
BSS0.8-30A					S1T	4	20								24	25.6		
BSS0.8-40	S1		40	5	20	32	33.6	4	8	12	—	—	—	—				
BSS1-16B	m1	16	S1T	6	15	18	20	6	8	14	M4	4	—	—				
BSS1-18B		18			15	18	20											
BSS1-20C		20			16	20	22											
BSS1-30B		30			25	30	32											
BSS1-40A		40			28	40	42											

Allowable torque (N·m)	Allowable torque (kgf·m)	Backlash (mm)	Weight (kg)	Catalog Number
0.058	0.0059	0~0.10	0.0054	BSS0.5-15A
0.065	0.0066		0.0062	BSS0.5-16A
0.091	0.0093		0.0043	BSS0.5-20
0.10	0.011		0.0098	BSS0.5-20A
0.12	0.012		0.0054	BSS0.5-22A
0.12	0.013		0.0063	BSS0.5-24B
0.16	0.016		0.0077	BSS0.5-25
0.22	0.022		0.011	BSS0.5-30
0.23	0.024		0.010	BSS0.5-30A
0.31	0.031		0.0099	BSS0.5-30B
0.31	0.032		0.0092	BSS0.5-30C
0.40	0.041		0.018	BSS0.5-38A
0.43	0.043		0.020	BSS0.5-40
0.55	0.056		0.033	BSS0.5-50A
0.79	0.081		0.014	BSS0.8-20
0.52	0.053		0.021	BSS0.8-24B
0.62	0.063	0.024	BSS0.8-25	
0.73	0.074	0.034	BSS0.8-30	
1.28	0.13	0.035	BSS0.8-30A	
1.86	0.19	0.046	BSS0.8-40	
		0.08~0.18	0.015	BSS1-16B
			0.021	BSS1-18B
			0.026	BSS1-20C
			0.065	BSS1-30B
			0.10	BSS1-40A

Spur Gears
 Helical Gears
 Internal Gears
 Racks
 CP Racks & Pinions
 Miter Gears
 Bevel Gears
 Screw Gears
 Worm Gears
 Gearboxes
 Other Products

Spur Gears
 Helical Gears
 Internal Gears
 Racks
 CP Racks & Pinions
 Miter Gears
 Bevel Gears
 Screw Gears
 Worm Gears
 Gearboxes
 Other Products