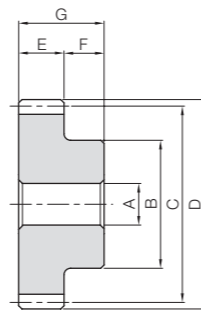




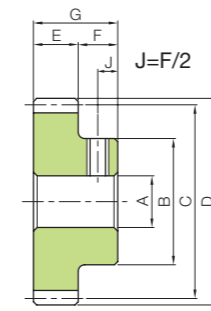
Specifications	
Precision grade	JIS grade N9 (JIS B1702-1: 1998) *
Reference section of gear	Normal plane
Gear teeth	Standard full depth
Normal pressure angle	20°
Helix angle	45°
Material	CAC702 (old JIS A & BC2)
Heat Treatment	—

* The precision grade of J Series products is equivalent to the value shown in the table.

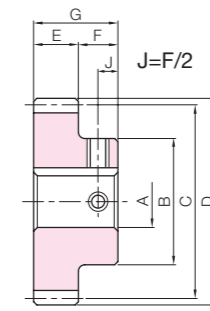


S1

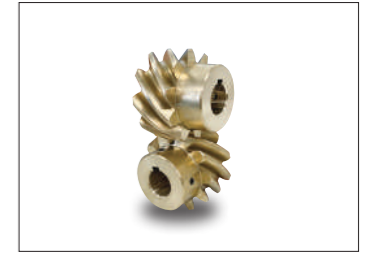
J Series



S1T



S1K



To order J Series products, please specify: **Catalog No. + J + BORE.**

Catalog Number	Module	No. of teeth	Direction of helix	Shape	Bore		Pitch dia.	Outside dia.	Face width	Hub width	Total length	Allowable torque (N·m)	Allowable torque (kgf·m)	Backlash (mm)	Weight (kg)		
					AH7	B											
AN1-13R AN1-13L	m1	13	R L	S1	6	15	18.38	20.38	10	10	20	0.31	0.032	0.08~0.18	0.029		
AN1-15R AN1-15L		15	R L			18	21.21	23.21								0.48	0.049
AN1.5-10R AN1.5-10L	m1.5	10	R L	S1	8	16	21.21	24.21	15	10	25	0.48	0.049	0.10~0.22	0.046		
AN1.5-13R AN1.5-13L		13	R L			23	27.58	30.58								1.03	0.10
AN1.5-15R AN1.5-15L		15	R L			25	31.82	34.82								1.55	0.16
AN2-10R AN2-10L	m2	10	R L	S1	12	22	28.28	32.28	20	15	35	1.10	0.11	0.12~0.26	0.11		
AN2-13R AN2-13L		13	R L			30	36.77	40.77								2.36	0.24
AN2-15R AN2-15L		15	R L			35	42.43	46.43								3.56	0.36
AN2.5-10R (Made to Order) AN2.5-10L (Made to Order)	m2.5	10	R L	S1	12	26	35.36	40.36	22	16	38	2.11	0.22	0.14~0.28	0.20		
AN2.5-13R (Made to Order) AN2.5-13L (Made to Order)		13	R L			35	45.96	50.96								4.47	0.46
AN2.5-15R (Made to Order) AN2.5-15L (Made to Order)		15	R L			40	53.03	58.03								6.72	0.69
AN3-10R (Made to Order) AN3-10L (Made to Order)	m3	10	R L	S1	15	34	42.43	48.43	25	18	43	3.56	0.36	0.14~0.32	0.34		
AN3-13R (Made to Order) AN3-13L (Made to Order)		13	R L			45	55.15	61.15								7.51	0.77
AN3-15R (Made to Order) AN3-15L (Made to Order)		15	R L			50	63.64	69.64								11.3	1.15

[Precautions for Made to Order Products] ① Prices and lead times for Made to Order products require separate estimates. Contact your dealer.

Bore H7	* The product shapes of J Series items are identified by background color.														
	6	8	10	12	14	15	16	17	18	19	20	22	25	28	30
Keyway JS9	—		4x1.8		5x2.3				6x2.8				8x3.3		
Screw size	—		4x1.8		5x2.3				6x2.8				8x3.3		
Catalog Number	M4	M5	M4				M5				M6				
AN1-13RJ BORE															
AN1-13LJ BORE															
AN1-15RJ BORE															
AN1-15LJ BORE															
AN1.5-10RJ BORE															
AN1.5-10LJ BORE															
AN1.5-13RJ BORE															
AN1.5-13LJ BORE															
AN1.5-15RJ BORE															
AN1.5-15LJ BORE															
AN2-10RJ BORE															
AN2-10LJ BORE															
AN2-13RJ BORE															
AN2-13LJ BORE															
AN2-15RJ BORE															
AN2-15LJ BORE															

[Caution on J series] ① Cancellation is not possible for made-to-order products. See page 42 for lead times and allowable order quantities. See page 44 for other precautions.

