



### Features

#### Characteristics of Gear Couplings

- SV and SVI series are made according to the automotive involute spline standard, JIS D 2001: 1959 (FLAT ROOT SIDE FIT, Backlash 0.06 to 0.15)
- Involute spline shafts and bushings are thermal refined to have good abrasion-resistance.
- Spline bushings may be made in CAC (bronze) type material as a special custom order item.

#### Points to observe during use

- Be sure not to bend shafts or break teeth when performing secondary operations on SV Involute Spline shafts.
- When using SVI Spline Bushings with sliding movement, lubrication is necessary on the sliding surface. To prevent scuffing, it is recommended to apply lubricating grease. If used in applications where oil contamination is not desirable, solid lubrication is recommended.

#### The surface strength of Spline

The design concept of the spline surface strength is the same as that of a key. Here is the formula for the allowable transmission force (N) of spline.

$$F = \eta \cdot z \cdot h_w \cdot l \cdot \sigma$$

And the formula of allowable torque T (N · m) of spline with respect to the surface strength.

$$T = \frac{F \cdot d_w}{2000}$$

In designing a spline shafts, besides considering the surface strength, we should take into account the torsional and bending stresses of the spline.

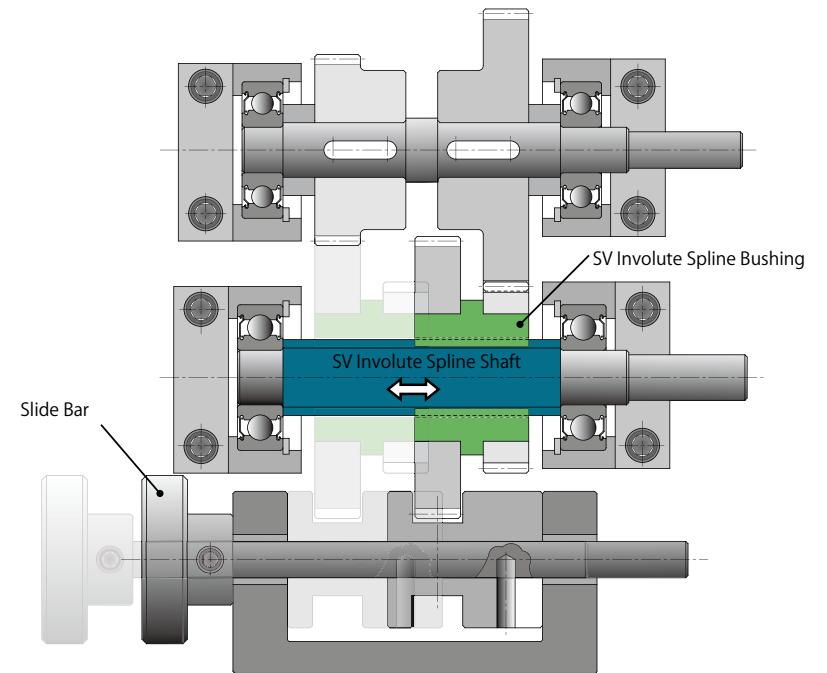
Here

- $\eta$  : Contact ratio of surface → 0.75 (assumed)
- $z$  : Number of teeth → number of teeth (z) of spline from the table
- $h_w$  : Contact depth of tooth → 1.485
- $l$  : Contact length of spline → Total length (A) of involute spline bushing
- $\sigma$  : Allowable surface stress of spline → 19.61MPa (2kgf/mm<sup>2</sup>) (assumed)
- $d_w$  : Contact diameter (mm) → Tip diameter of spline shaft  $D - h_w$

### Application



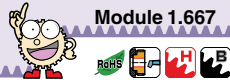
Assembly Example: KHK Stock Gears Sample Unit



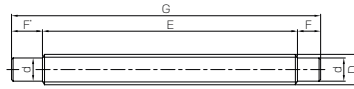
SV Involute Spline Shafts are used in shift transmission mechanisms

# SV Involute Spline Shafts

Module 1.667



Specifications	
Gear teeth	Stub teeth
Pressure angle	20°
Material	S45C
Heat treatment	Thermal refined
Tooth hardness	200 ~ 270HB



TA

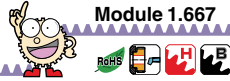
Catalog No.	Module	No. of teeth	Shape	Outside dia.	Shaft dia.	Face width	Shaft length (R)	Shaft length (L)	Total length	Backlash (mm)	Weight (kg)
				D	d	E	F	F'	G		
SV17-170	m1.667	8	TA	16.67	13	135	20	15	170	0.06~0.15	0.26
SV20-200		10	TA	19.67	15	165	20	15	200	0.06~0.15	0.43
SV25-250		13	TB	24.67	20	220	—	30	250	0.06~0.15	0.88
SV30-300		16	TB	29.67	25	270	—	30	300	0.06~0.15	1.55

[Caution on Secondary Operations] ① Be sure not to bend shafts or break teeth when performing secondary operations on SV Involute Spline shafts.

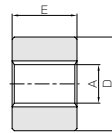
\* For products not categorized in our KHK Stock Gear series', custom gear production services with **short lead times** is available. For details see page 8.

# SVI Involute Spline Bushings

Module 1.667



Specifications	
Gear teeth	Stub teeth
Pressure angle	20°
Material	S45C
Heat treatment	Thermal refined
Tooth hardness	200 ~ 270HB



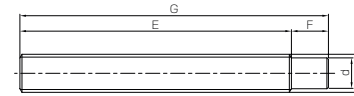
T1

Catalog No.	Module	No. of teeth	Shape	Internal dia.	Outside dia.	Face width	Allowable torque (N · m)	Allowable torque (kgf · m)	Backlash (mm)	Weight (kg)
				A	D	E	Surface durability	Surface durability		
SVI17-40	m1.667	8	T1	13.7	40	25	33.2	3.38	0.06~0.15	0.21
SVI20-45		10		16.7	45	30	59.6	6.08	0.06~0.15	0.31
SVI25-55		13		21.7	55	38	125	12.8	0.06~0.15	0.57
SVI30-65		16		26.7	65	45	222	22.6	0.06~0.15	0.93

[Caution on Product Characteristics] ① The allowable torques are calculated based on "The surface strength of Spline".  
 ② It is essential to apply lubricant on contact surface of the spline shaft and the hub. To prevent scuffing, it is recommended to apply lubricating grease. If used in applications where oil contamination is not desirable, solid lubrication is recommended.

\* For products not categorized in our KHK Stock Gear series', custom gear production services with **short lead times** is available. For details see page 8.

# Involute Spline Shafts



TB



# SVI Involute Spline Bushings

SV

Spur Gears

Helical Gears

Internal Gears

Flacks

CP Racks & Pinions

Miter Gears

Bevel Gears

Screw Gears

Worm Gear Pair

Bevel Gearboxes

Other Products