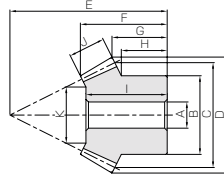




Stainless Steel Bevel Gears

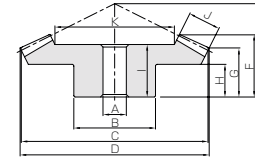


Module 1.5, 2, 2.5, 3



B3

Specifications	
Precision grade	JIS B 1704: 1978 grade 3
Gear teeth	Gleason
Pressure angle	20°
Material	SUS303
Heat treatment	—
Tooth hardness	(less than 187HB)



B4

Catalog No.	Gear ratio	Module	No. of teeth	Shape	Bore		Hub dia.	Pitch dia.	Outside dia.	Mounting distance	Total length	Crown to back length		Hub width
					A _{H7}	B						C	D	
SUB1.5-3020 SUB1.5-2030	1.5	m1.5	30	B4	10	30	45	46.24	28	18.53	13.93	8	8	8.83
			20	B3	8	25	30	33.13	33	18.63	11.54	8	8	
SUB2-3020 SUB2-2030	1.5	m2	30	B4	10	35	60	61.65	40	26.87	21.24	15	15	13.33
			20	B3	10	35	40	44.18	45	25.06	16.39	15	15	
SUB2.5-3020 SUB2.5-2030	1.5	m2.5	30	B4	15	45	75	77.07	50	34.22	26.55	18	18	14.16
			20	B3	12	40	50	55.22	55	31.06	19.24	18	18	
SUB3-3020 SUB3-2030	1.5	m3	30	B4	15	60	90	92.48	55	35.56	26.86	17	17	21.66
			20	B3	15	50	60	66.27	70	40.48	27.09	17	17	
SUB1.5-4020 SUB1.5-2040	2	m1.5	40	B4	10	38	60	60.88	35	25.01	20.88	15	15	14.75
			20	B3	8	25	30	33.61	46	25.54	16.9	15	15	
SUB2-4020 SUB2-2040	2	m2	40	B4	12	50	80	81.17	45	32.37	26.17	18	18	18
			20	B3	12	32	40	44.81	60	34.16	21.2	18	18	
SUB2.5-4020 SUB2.5-2040	2	m2.5	40	B4	15	60	100	101.46	55	39.73	31.46	20	20	22.5
			20	B3	12	40	50	56.01	75	43.78	26.5	20	20	
SUB3-4020 SUB3-2040	2	m3	40	B4	20	70	120	121.76	65	45.85	36.76	24	24	27.5
			20	B3	16	50	60	67.22	90	50.81	31.8	24	24	
SUB1.5-4515 SUB1.5-1545	3	m1.5	45	B4	10	36	67.5	68.06	28	20.44	17.59	11	11	12.5
			15	B3	8	18	22.5	26.54	47	23.20	13.92	11	11	
SUB2-4515 SUB2-1545	3	m2	45	B4	12	60	90	90.75	40	30.4	26.12	17	17	14
			15	B3	10	24	30	35.35	60	29.8	15.89	17	17	
SUB2.5-4515 SUB2.5-1545	3	m2.5	45	B4	15	60	112.5	113.43	50	38.35	32.65	22	22	17.5
			15	B3	12	30	37.5	44.18	75	38.41	19.86	22	22	
SUB3-4515 SUB3-1545	3	m3	45	B4	20	80	135	136.12	55	40.74	34.18	20	20	21.33
			15	B3	15	38	45	53.02	90	45.17	23.84	20	20	

[Caution on Product Characteristics]

- ① The allowable torques shown in the table are the calculated values according to the assumed usage conditions. Please see page 283 for more details.
- ② Dimensions of the outside diameter, the overall length and crown to back length are all theoretical values, and some differences will occur due to the corner chamfering of the gear tips.

[Caution on Secondary Operations]

- ① Please read "Caution on Performing Secondary Operations" (Page 284) when performing modifications and/or secondary operations for safety concerns. KHK Quick-Mod Gears, the KHK's system for quick modification of KHK stock gears is also available.

* For products not categorized in our KHK Stock Gear series, custom gear production services with **short lead times** is available. For details see Page 8.

Stainless Steel Bevel Gears

Length of bore	Face width	Holding surface dia.	Allowable torque (N·m)		Allowable torque (kgf·m)		Backlash (mm)	Weight (kg)	Catalog No.
			Bending strength	Surface durability	Bending strength	Surface durability			
16	9	27.37	3.22	0.46	0.33	0.047	0.05~0.15	0.12	SUB1.5-3020 SUB1.5-2030
17			2.23	0.31	0.23	0.032			
23	11	37.56	7.22	1.08	0.74	0.11	0.07~0.17	0.54	SUB2.5-3020 SUB2.5-2030
22			5.01	0.72	0.51	0.074			
30	15	45.61	14.9	2.28	1.52	0.23	0.08~0.18	0.61	SUB1.5-4020 SUB1.5-2040
28			10.3	1.52	1.05	0.15			
31	17	57.14	24.8	3.87	2.53	0.39	0.07~0.17	1.21	SUB2.5-4020 SUB2.5-2040
37			17.2	2.58	1.76	0.26			
22	10	39.64	5.23	0.79	0.53	0.081	0.05~0.15	0.27	SUB1.5-4020 SUB1.5-2040
24			2.64	0.40	0.27	0.040			
27	15	48.46	13.4	2.07	1.36	0.21	0.06~0.16	0.19	SUB2.5-4020 SUB2.5-2040
32			6.72	1.04	0.69	0.11			
35	20	60.28	27.1	4.29	2.76	0.44	0.08~0.18	0.69	SUB1.5-4515 SUB1.5-1545
41			13.6	2.15	1.39	0.22			
38	22	73.81	44.4	7.19	4.53	0.73	0.06~0.16	0.095	SUB2.5-4515 SUB2.5-1545
47			22.4	3.60	2.28	0.37			
17	10	46.58	5.70	0.72	0.58	0.074	0.05~0.15	0.25	SUB1.5-4515 SUB1.5-1545
22.5			14.75	1.97	1.20	0.205			
26	15	59.04	14.6	1.90	1.49	0.19	0.07~0.17	1.36	SUB2.5-4515 SUB2.5-1545
29			5.03	0.63	0.51	0.065			
35	20	72.84	29.6	3.94	3.02	0.40	0.08~0.18	0.34	SUB3-4515 SUB3-1545
37			10.2	1.31	1.04	0.13			
35	23	88.18	49.9	6.77	5.09	0.69	0.08~0.18	2.32	SUB3-4515 SUB3-1545
43			17.2	2.26	1.76	0.23			

GCU-M Miter Gear Kit



Installation : Intersecting axes gears
 Gear Type : Miter Gears
 Gears : SM2-25
 PM2-25
 Gear Ratio : 1
 Weight : Approx. 1kg

Use of bevel gears allows the changing of the shaft angle by 90 degrees. Applications include the changing of the direction of power.