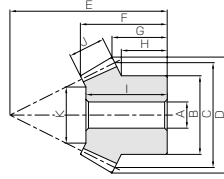


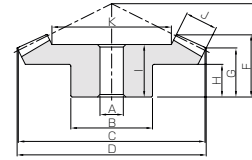


Specifications	
Precision grade	JIS B 1704 : 1978 grade 4 *
Gear teeth	Gleason
Pressure angle	20°
Material	MC901
Heat treatment	—
Tooth hardness	(115 ~ 120HRR)

* The precision grade of this product is equivalent to the value shown in the table.



B3



B4

Catalog No.	Gear ratio	Module	No. of teeth	Shape	Bore		Pitch dia.	Outside dia.	Mounting distance	Total length	Crown to back length		Hub width	
					A	B					C	D		E
PB1.5-3020 PB1.5-2030	1.5	m1.5	30	B4	10	30	45	46.24	28	18.53	13.93	8	8.83	
20			B3	8	25	30	33.13	33	18.63	11.54				
PB2-3020 PB2-2030		m2	30	B4	10	35	60	61.65	40	26.87	21.24	15	13.33	
20			B3	10	35	40	44.18	45	25.06	16.39				
PB2.5-3020 PB2.5-2030		2	m2.5	30	B4	15	45	75	77.07	50	34.22	26.55	18	14.16
20				B3	12	40	50	55.22	55	31.06	19.24			
PB3-3020 PB3-2030	m3		30	B4	15	60	90	92.48	55	35.56	26.86	17	21.66	
20			B3	15	50	60	66.27	70	40.48	27.09				
PB1-4020 PB1-2040	3		m1	40	B4	8	25	40	40.59	22	15.07	12.59	8	7
20				B3	6	16	20	22.41	28	13.78	8.6			
PB1.25-4020 PB1.25-2040		m1.25	40	B4	10	32	50	50.73	27	18.54	15.23	10	10.25	
20			B3	8	22	25	28.01	36	18.66	11.75				
PB1.5-4020 PB1.5-2040		2	m1.5	40	B4	10	38	60	60.88	35	25.01	20.88	15	14.75
20				B3	8	25	30	33.61	46	25.54	16.9			
PB2-4020 PB2-2040	m2		40	B4	12	40	80	81.17	45	32.37	26.17	18	18	
20			B3	12	32	40	44.81	60	34.16	21.2				
PB2.5-4020 PB2.5-2040	m2.5		40	B4	15	50	100	101.47	55	39.73	31.47	20	22.5	
20			B3	12	40	50	56.01	75	43.78	26.5				
PB3-4020 PB3-2040	m3	40	B4	20	60	120	121.76	65	45.85	36.76	24	27.5		
20		B3	16	50	60	67.22	90	50.81	31.8					
PB1.5-4515 PB1.5-1545	3	m1.5	45	B4	10	40	67.5	68.06	28	20.44	17.59	11	12.5	
15			B3	8	18	22.5	26.54	47	23.20	13.92				
PB2-4515 PB2-1545		m2	45	B4	12	60	90	90.75	40	30.4	26.12	17	14	
15			B3	10	24	30	35.35	60	29.8	15.89				
PB2.5-4515 PB2.5-1545		m2.5	45	B4	15	60	112.5	113.43	50	38.35	32.65	22	17.5	
15			B3	12	30	37.5	44.18	75	38.41	19.86				
PB3-4515 PB3-1545	m3	45	B4	20	80	135	136.12	55	40.74	34.18	20	21.33		
15		B3	15	38	45	53.02	90	45.17	23.84					

- [Caution on Product Characteristics]
- ① Significant variations in temperature or humidity can cause dimensional changes in plastic gears (MC Nylon gears), including bore size (H8 when produced), tooth diameter, and backlash. Please see the section "Design of Plastic Gears" in separate technical reference book. (Page 101).
 - ② The allowable torques shown in the table are calculated values according to the assumed usage conditions. Please see page 283 for more details.
 - ③ Dimensions of the outside diameter, the overall length and crown to back length are all theoretical values, and some differences will occur due to the corner chamfering of the gear tips.
 - ④ Without lubrication, using plastic gears in pairs may generate heat and dilation. It is recommended to mate them with steel gears.

Length of bore	Face width	Holding surface dia.	Allowable torque (N·m)		Allowable torque (kgf·m)		Backlash (mm)	Weight (kg)	Catalog No.
			Bending strength	Surface durability	Bending strength	Surface durability			
16 17	9	27.37 17.05	1.61 0.87	—	0.16 0.089	—	0~0.25	0.018 0.0093	PB1.5-3020 PB1.5-2030
23 22	11	37.56 21.34	3.65 1.97	—	0.37 0.20	—	0~0.26	0.039 0.024	PB2-3020 PB2-2030
30 28	15	45.61 27.42	7.46 4.04	—	0.76 0.41	—	0~0.27	0.081 0.042	PB2.5-3020 PB2.5-2030
31 37	17	57.14 34.71	12.5 6.77	—	1.28 0.69	—	0~0.28	0.14 0.082	PB3-3020 PB3-2030
12 12	6	26.58 9.17	0.74 0.28	—	0.075 0.028	—	0~0.23	0.010 0.0029	PB1-4020 PB1-2040
16 17	8	33.61 13.22	1.50 0.56	—	0.15 0.058	—	0~0.24	0.021 0.0068	PB1.25-4020 PB1.25-2040
22 24	10	39.64 17.28	2.66 1.00	—	0.27 0.10	—	0~0.25	0.039 0.013	PB1.5-4020 PB1.5-2040
27 32	15	48.46 20.92	6.72 2.52	—	0.69 0.26	—	0~0.26	0.076 0.028	PB2-4020 PB2-2040
35 41	20	60.28 24.56	13.5 5.08	—	1.38 0.52	—	0~0.27	0.16 0.060	PB2.5-4020 PB2.5-2040
38 47	22	73.81 29.61	22.4 8.42	—	2.29 0.86	—	0~0.28	0.25 0.10	PB3-4020 PB3-2040
17 22.5	10	46.58 14.75	3.18 0.68	—	0.32 0.070	—	0~0.25	0.040 0.0061	PB1.5-4515 PB1.5-1545
26 29	15	59.04 19.13	8.07 1.73	—	0.82 0.18	—	0~0.26	0.12 0.014	PB2-4515 PB2-1545
35 37	20	72.84 20.51	16.3 3.50	—	1.66 0.36	—	0~0.27	0.20 0.028	PB2.5-4515 PB2.5-1545
35 43	23	88.18 22.54	27.6 5.92	—	2.81 0.60	—	0~0.28	0.35 0.050	PB3-4515 PB3-1545

- [Caution on Secondary Operations]
- ① Please read "Caution on Performing Secondary Operations" (Page 284) when performing modifications and/or secondary operations for safety concerns. KHK Quick-Mod Gears, the KHK's system for quick modification of KHK stock gears is also available.
 - ② Plastic gears are susceptible to the effects of temperature and moisture. Dimensional changes may occur while performing secondary operations and during post-machining operations.

GCU-M Miter Gear Kit



Installation : Intersecting axes gears
 Gear Type : Miter Gears
 Gears : SM2-25
 PM2-25
 Gear Ratio : 1
 Weight : Approx. 1kg

Use of bevel gears allows the changing of the shaft angle by 90 degrees. Applications include the changing of the direction of power.

* For products not categorized in our KHK Stock Gear series, custom gear production services with **short lead times** is available. For details see Page 8.